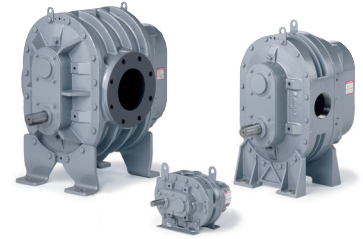


Plastic Industry

AIRCOM Technologies has been involved in this market since 1998. Our ability to select and apply the correct equipment for the plastic industry applications is based on technical knowledge and a complete range of products. Please call us to review your project requirements.

Positive Displacement Blowers

These blowers have proven themselves in the industry for performance and dependability and are up to 50% quieter than competition. Manufactured to ISO - 9002 Quality Standards and are preferred by leading original equipment manufacturers. Airflow Range: 24 - 3,015 cfm (40 - 5,125 m³/h), pressure to 15 psig (1.03 bar), vacuum to 16.0 "Hg (542 mbar).

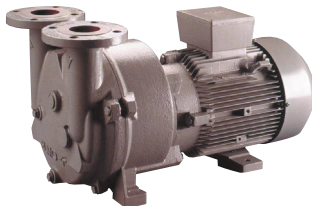
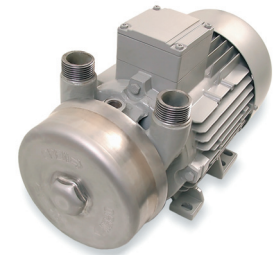


Positive Displacement Blowers

These blowers have an advanced heavy-duty design with industry proven performance and reliability. For continuous operations they are equipped with a dual splash lubrication system. Also manufactured to ISO 9002 quality standards, they deliver oil free air. Airflow range: 90 - 4,290 cfm (112 - 7,290 m³/h), pressure to 15 psig (1.03 bar), vacuum to 16.0 "Hg (542 mbar).

Liquid vacuum pumps

L_200 - These liquid vacuum pumps are simply unsurpassed when it comes to safety and reliability in operation. These machines are simply the best: reinforced stainless-steel shafts in the pump body and roller bearings with an optimized lubricant supply ensure safe, low-maintenance operation even under extreme loads.



Liquid vacuum pumps

L_300 - These are mono block liquid vacuum pumps are characterized by a very high suction capacity of up to 600 m³/h (360 cfm) and are primarily used in applications involving high volumes. Compared to conventional machines, these compact design means they require only half the installation space.

We offer on site and in house repair, maintenance contract, system optimization, as well as a wide range of filters, silencers and instrumentation.

For more information please contact **Mr. Denis Lemoing**, ext: 225 / denisl@aircom.ca

Accessories • Service & Repair • Parts