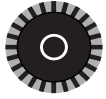


# G-BH 1 N

## Data sheet 2BH7 630-0A

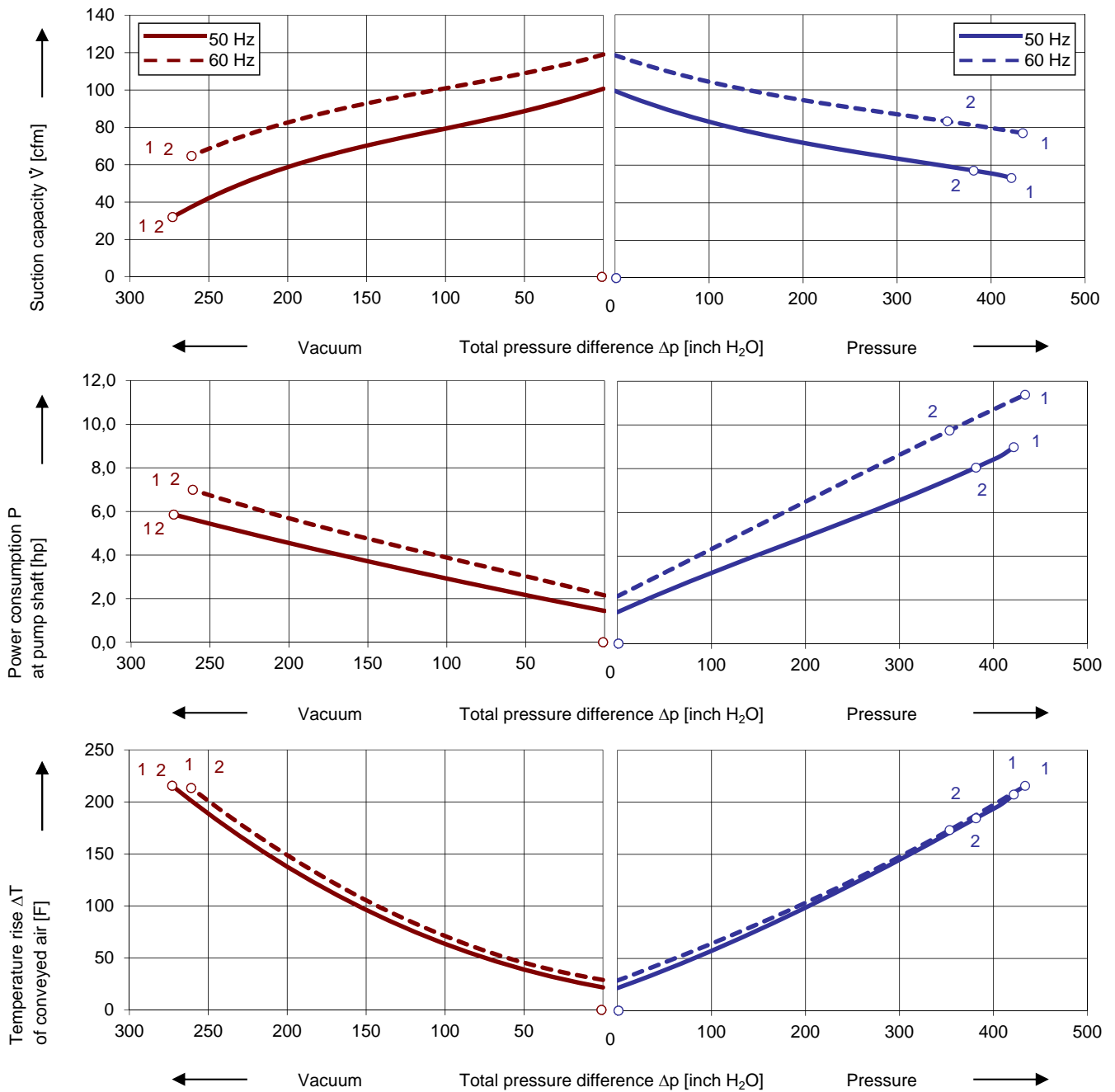
Side channel blower with NEMA Premium motor



### Performance curves

#### Vacuum operation (acfm)

#### Pressure operation (scfm)



The performance curves are based on air at a temperature of 59 F and an atmospheric pressure of 29.92 inch Hg with a tolerance of  $\pm 10\%$ . The total Suction capacity relates to inlet conditions. Pressure capacity relates to atmospheric conditions. For other conditions please contact Elmo Rietschle.

Every G-BH blower can be used either for vacuum or pressure in continuous operation over the total performance curve range. The standard motors have a protection category of IP 55 and insulation class F. These blowers are UL and CSA approved.

## Selection and ordering data

Type										
No.	Fre- quency	Rated			Max. differential <sup>2)</sup> pressure		sound press. level <sup>3)</sup>	Efficiency class <sup>4)</sup>	Weight approx.	Order No.
		Voltage <sup>1)</sup>	Current	Power	Vacuum	Pressure				
		Hz	V	A	hp	inch H <sub>2</sub> O				
<b>IE3 3~ 50/60 Hz, IP55, Insulation material class F, UL (certificate number E489378)</b>										
1	50	190-210 Δ	23,5 Δ	8,4	-273	381	72	IE3	196	2BH7630-0AK71-1
	60	190-210 YY / 380-420 Y	27,6 YY / 13,8 Y	9,8	-261	353	76	IE3		
	60	200 YY	27,6 YY	9,8	-261	353	76	NP		
2	50	190-210 Δ	30,8 Δ	11,5	-273	422	72	IE3	223	2BH7630-0AK61-1
	60	190-210 YY / 380-420 Y	35,2 YY / 17,6 Y	13,3	-261	434	76	IE3		
	60	200 YY	35,2 YY	13,3	-261	434	76	NP		
<b>IE3 3~ 50/60 Hz, IP55, Insulation material class F, UL (certificate number E489378)</b>										
1	50	220-240 Δ / 380-420 Y	20,4 Δ / 11,8 Y	8,4	-273	381	72	IE3	196	2BH7630-0AK76-1
	60	220-240 YY / 440-480 Y	24,0 YY / 12,0 Y	9,8	-261	353	76	IE3		
	60	230 YY / 460 Y	24,0 YY / 12,0 Y	9,8	-261	353	76	NP		
2	50	220-240 Δ / 380-420 Y	26,8 Δ / 15,5 Y	11,5	-273	422	72	IE3	223	2BH7630-0AK66-1
	60	220-240 YY / 440-480 Y	30,6 YY / 15,3 Y	13,3	-261	434	76	IE3		
	60	230 YY / 460 Y	30,6 YY / 15,3 Y	13,3	-261	434	76	NP		
<b>IE3 3~ 50/60 Hz, IP55, Insulation material class F, UL (certificate number E489378)</b>										
1	50	500 Y	9,5 Y	8,4	-273	381	72	IE3	196	2BH7630-0AQ73-1
	60	575 Y	9,6 Y	9,8	-261	353	76	NP		
2	50	500 Y	12,4 Y	11,5	-273	422	72	IE3	223	2BH7630-0AQ63-1
	60	575 Y	12,2 Y	13,3	-261	434	76	NP		
<b>IE3 3~ 50/60 Hz, IP55, Insulation material class F, UL (certificate number E489378)</b>										
1	50	380-420 Δ / 660-725 Y	11,8 Δ / 6,8 Y	8,4	-273	381	72	IE3	196	2BH7630-0AQ77-1
	60	440-480 Δ	12,0 Δ	9,8	-261	353	76	IE3		
	60	460 Δ	12,0 Δ	9,8	-261	353	76	NP		
2	50	380-420 Δ / 660-725 Y	15,5 Δ / 8,9 Y	11,5	-273	422	72	IE3	223	2BH7630-0AQ67-1
	60	440-480 Δ	15,3 Δ	13,3	-261	434	76	IE3		
	60	460 Δ	15,3 Δ	13,3	-261	434	76	NP		

3) Surface sound pressure levels are according to EN ISO 3744, measured with an equivalent unit at a distance of 1 m. The pump is throttled to an average suction pressure, with piping connected, but no relief valves fitted, tolerance ±3 dB (A).

4) The motors according to NEMA MG1-12. NP=NEMA Premium; NEMA Premium includes IE3.

All G-BH blowers conform to the 2006/42/EC (machinery) and 2006/95/EC (low voltage) directives and the EN 60034 norm "Rotating electrical machines".

Service factor (SF) and motor efficiency according NEMA MG1-12.

Voltage tolerances for three phase motors are +/-10%.

The frequency tolerance is +/- 2 % maximum.

## Motor for alternate voltages

Voltage range		Efficiency <sup>4)</sup>	C  US	2BH7...-... □ . □	
50 Hz	60Hz			60 Hz	
<b>3~</b>					
200 VΔ	200 V YY / 230 VΔ / 400 VY		•		K 1
190-210 VΔ	190-210 VYY / 220-240 VΔ / 380-420VY	IE3	•		
200 V YY / 230 VΔ / 400 VY	230 V YY / 460 VY		•		K 6
190-210 VYY / 220-240 VΔ / 380-420VY	220-240 VYY / 440-480VY	IE3	•		
475-525 V Y	550-600 V Y		•		Q 3
475-525 VΔ	550-600 VΔ		•		Q 5
400 VΔ / 690 V Y	460 VΔ		•		Q 7

Changes in particular of the quoted performance curve, data and weights may occur without prior notice. The data given does not constitute an obligation from our side to deliver as shown.

Elmo Rietschle is a brand of Gardner Denver

**Gardner  
Denver**

Your Ultimate Source for Vacuum and Pressure

**Gardner Denver Deutschland GmbH**

Industriestraße 26  
97616 Bad Neustadt - Germany  
Tel.: +49 9771 6888-0  
Fax: +49 9771 6888-4000  
www.elmorietschle.com

**Gardner Denver, Inc.**

1800 Gardner Expressway  
Quincy, IL 62305  
Tel: 866-249-2275  
Fax: 217-221-8780  
www.elmorietschle.com