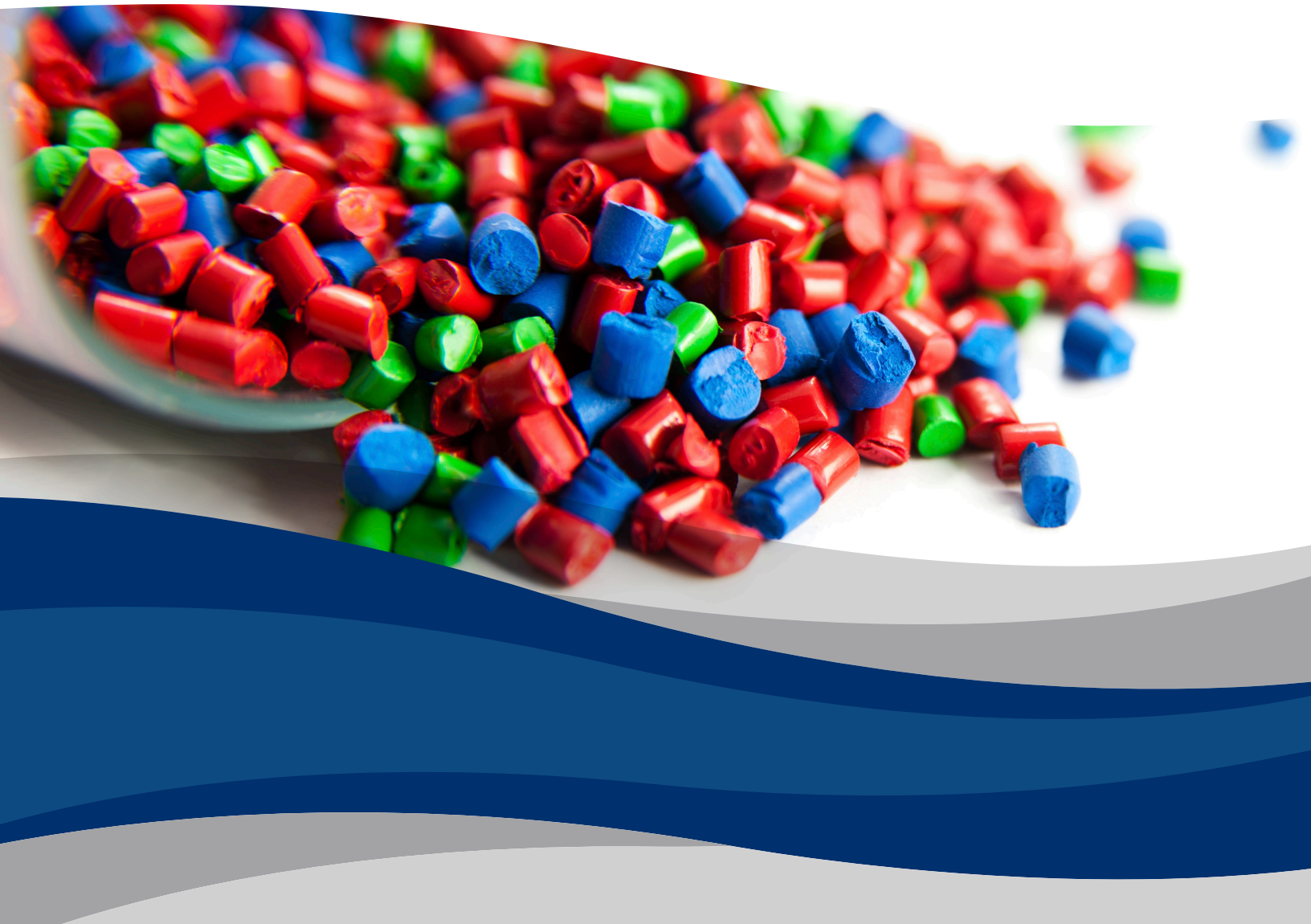


VACUUM & PRESSURE PRODUCTS

Plastics Industry



Conveying & Drying

■ Pellet Conveying

- Pellets are conveyed through extensive pipe networks
- Conveyed under vacuum (dense phase) or pressure (dilute phase)

■ Pellet Drying

- Pellets absorb moisture which can affect the quality of the final products
- Pellets are heated and dried to a specific moisture content
- Regenerative blowers are used to circulate heated air through storage silos
- Moisture is removed from the air by desiccant dryers
- Blowers are used to regenerate (dry out) desiccant dryers

G-Series

Regenerative



- Contact-less operation
- Quiet operation
- Tolerant to dust ingestion
- UL/CSA approved
- Service intervals up to 40,000 hours
- 50/60 Hz motors as standard

L-Series

Liquid Ring



- High resistance to corrosion
- Contact-less operation
- Increased water carry-over models
- UL/CSA approval
- 50/60 Hz motors as standard
- Available in partial or closed circulated

V-Series

Rotary Vane



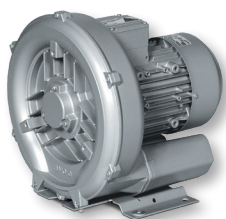
- Compact footprint
- Low noise level
- Long life vanes
- Oil-free or lubricated designs
- Extended maintenance intervals

C-Series

Claw



- Contact-less operation
- Oil-free compression
- Highly efficient
- No wearing parts
- Minimal maintenance



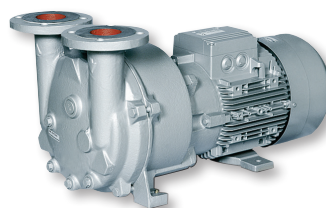
G-BH1



G-BH2



L-BL2



L-BV5



V-VC



V-VTR



C-VLR



C-VLR



Extruding

■ Extruder Venting

- Vacuum is used to remove air pockets, bubbles and moisture from melted plastic
- During the extruding process, vacuum also removes the low molecular substances
- Vacuum process provides optimal quality, strength and smoothness to the final product

■ Cooling & Drying

- Hot plastic discharged from extruder is cooled with regenerative blowers
- Blast cooling air ensures the ultimate quality and final product shape

■ Calibration

- Extruded products such as pipe require exacting final dimensions
- Hot extruded product is sent through a water cooling bath under vacuum
- Vacuum is used as a pressing force to ensure strict dimensional requirements
- Liquid ring pumps are ideal for this process

G-Series Regenerative



- Contact-less operation
- Quiet operation
- Tolerant to dust ingestion
- UL/CSA approved
- Service intervals up to 40,000 hours
- 50/60 Hz motors as standard

L-Series Liquid Ring



- High resistance to corrosion
- Contact-less operation
- Increased water carry-over models
- UL/CSA approval
- 50/60 Hz motors as standard
- Available in partial or closed circulated

V-Series Rotary Vane

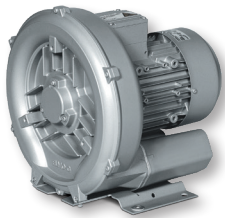
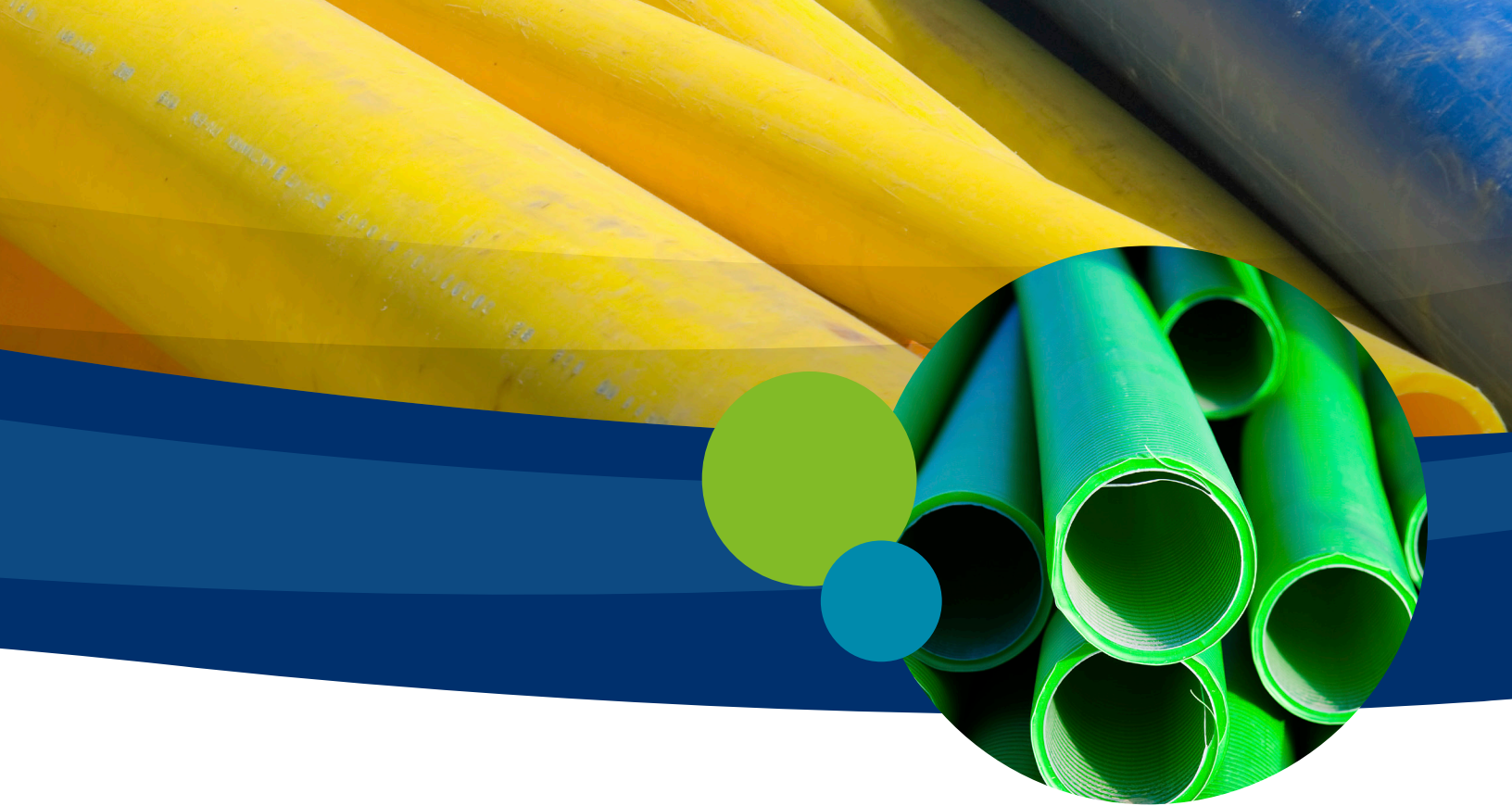


- Compact footprint
- Low noise level
- Long life vanes
- Oil-free or lubricated designs
- Extended maintenance intervals

S-Series Screw



- Continuous variable pitch screws
- Short evacuation times
- Oil-free compression
- High water vapor tolerance
- Minimal maintenance costs



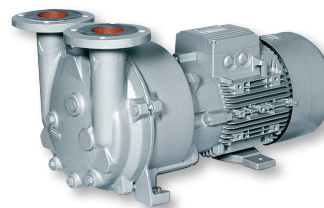
G-BH1



G-BH2



L-BL2



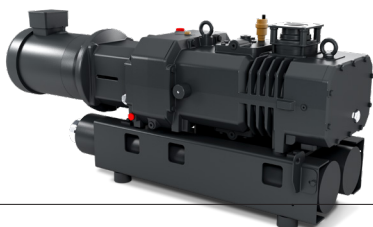
L-BV5



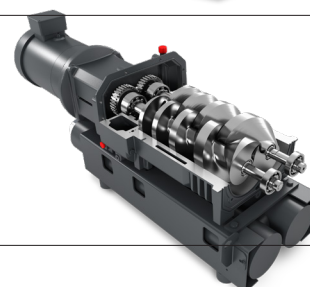
V-VC



V-VTR



S-VSI



S-VSI



Forming

■ Injection Molding

- Melted rubber and plastic are injected into a mold under pressure
- The addition of vacuum speeds up the process by removing trapped gasses during quick-fill conditions
- Vacuum solves quality issues such as part burns, voids, short shots and cosmetic defects

■ Thermoforming

- Sheets of thermoplastic are clamped down and heated to its softening temperature
- Vacuum force is used to press the sheet to conform to the shape of a mold
- Once cooled, part retains its final shape

■ Vacuum Bagging

- Items formed by composite layers and glue are placed in a large vacuum bag
- While under vacuum, atmospheric force is used to press the layers together during curing
- Vacuum removes small bubbles, speeds up the curing process and improves final quality

L-Series

Liquid Ring



- High resistance to corrosion
- Contact-less operation
- Increased water carry-over models
- UL/CSA approval
- 50/60 Hz motors as standard
- Available in partial or closed circulated

V-Series

Rotary Vane



- Compact footprint
- Low noise level
- Long life vanes
- Oil-free or lubricated designs
- Extended maintenance intervals

S-Series

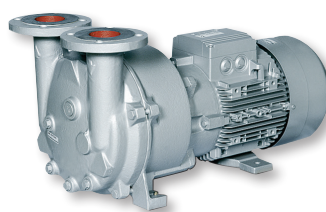
Screw



- Continuous variable pitch screws
- Short evacuation times
- Oil-free compression
- High water vapor tolerance
- Minimal maintenance costs



L-BL2



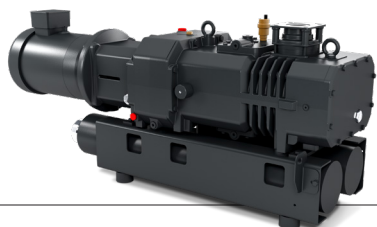
L-BV5



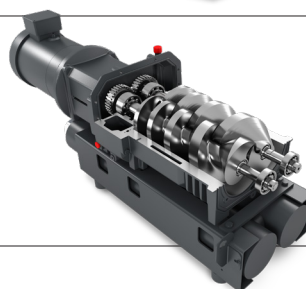
V-VC



V-VTR



S-VSI



S-VSI

Fastening

■ Gluing Plastic Parts

- Composite materials are formed into panels with glue
- Sheets are put into a stack and placed into a bag under vacuum
- Atmospheric pressure produces the required force to press the composites together into the final form during the curing process

■ Plastic Welding

- Plastic sheets are welded together using high velocity heated air (400–575°F)
- Oil-free rotary vane compressors are used to accelerate the air to the required velocity

L-Series Liquid Ring



- High resistance to corrosion
- Contact-less operation
- Increased water carry-over models
- UL/CSA approval
- 50/60 Hz motors as standard
- Available in partial or closed circulated

V-Series Rotary Vane



- Compact footprint
- Low noise level
- Long life vanes
- Oil-free or lubricated designs
- Extended maintenance intervals

C-Series Claw



- Contact-less operation
- Oil-free compression
- Highly efficient
- No wearing parts
- Minimal maintenance

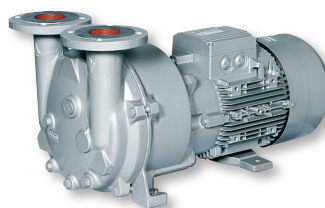
S-Series Screw



- Continuous variable pitch screws
- Short evacuation times
- Oil-free compression
- High water vapor tolerance



L-BL2



L-BV5



V-VC



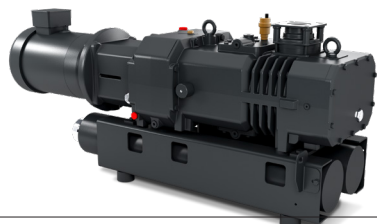
V-VTR



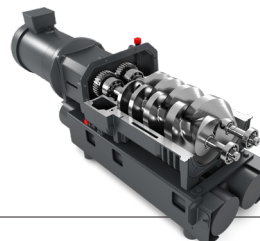
C-VLR



C-VLR



S-VSI



S-VSI

Forming

■ Expanded Polystyrene (EPS)

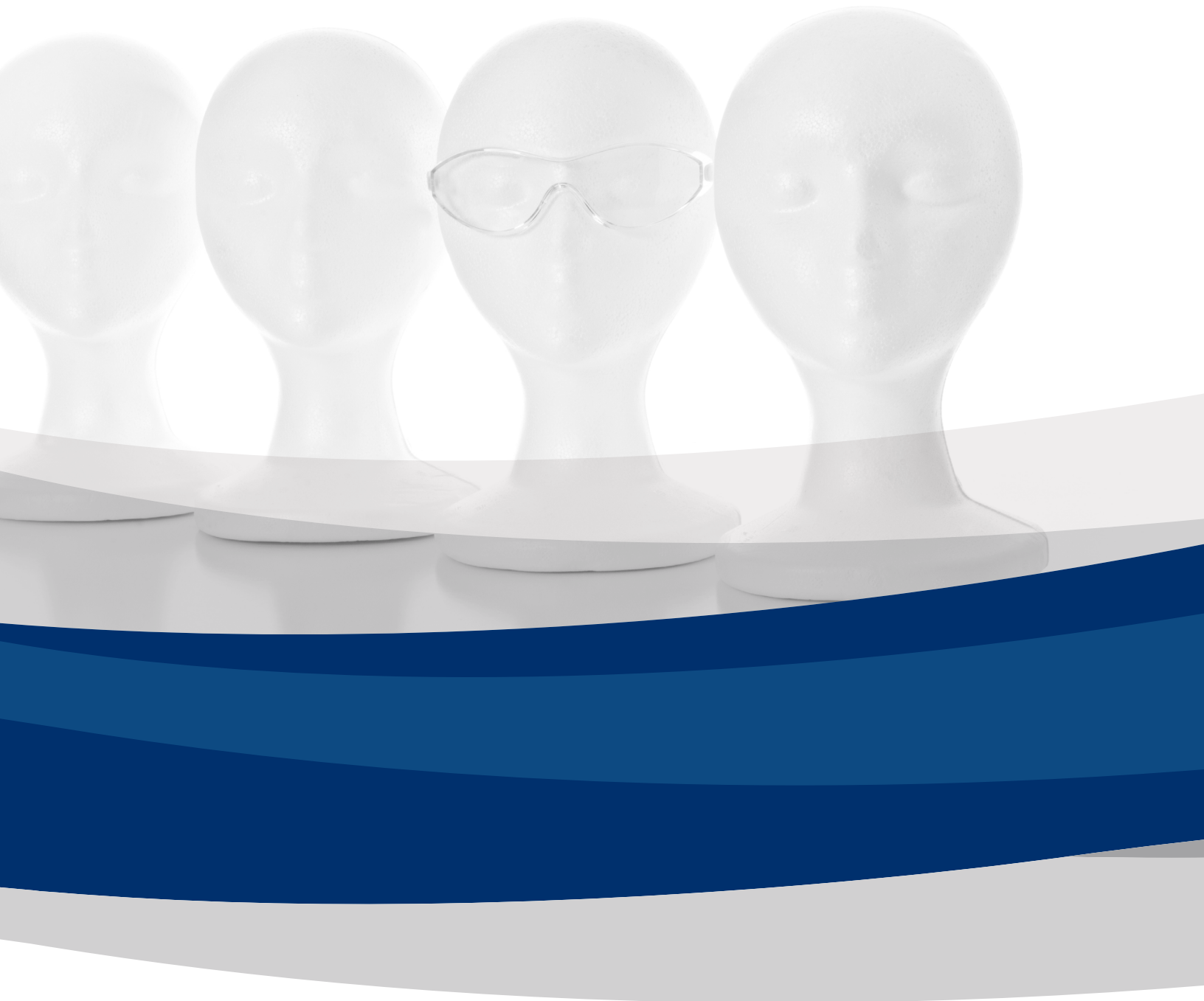
- Styrofoam products are formed from small beads of styrene in a form or mold
- Steam is injected into the mold during the process
- Vacuum is used to extract the steam and moisture from the mold

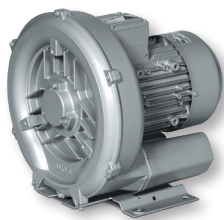
G-Series

Regenerative



- Contact-less operation
- Quiet operation
- Tolerant to dust ingestion
- UL/CSA approved
- Service intervals up to 40,000 hours
- 50/60 Hz motors as standard

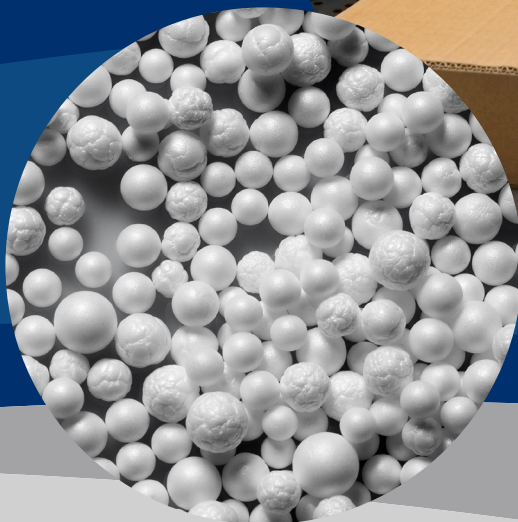




G-BH1



G-BH2



The leader in every market we serve
by continuously improving all business processes
with a focus on innovation and velocity



www.ElmoRietschle.com

©2024 Industrial Technologies and Services, LLC.
Printed in U.S.A.
ER-APP-PLASTIC 4th Ed. 8/24

