

VACUUM & PRESSURE PRODUCTS

# Woodworking Industry



## ■ Vacuum Hold-Down

- Vacuum is used as a holding force on CNC router tables
- It provides an even uniform clamping force to prevent shifting of material
- Wood, plastic and metal are held in place while routers cut out shapes
- Mechanical clamping does not yield the same results as vacuum



## C-Series

Claw



- Contact-less operation
- Oil-free compression
- Highly efficient
- No wearing parts
- Minimal maintenance

## V-Series

Rotary Vane



- Compact footprint
- Low noise level
- Long life vanes
- Oil-free or lubricated designs
- Extended maintenance intervals

## G-Series

Side Channel



- Contact-less operation
- Quiet operation
- Tolerant to dust ingestion
- UL/CSA approved
- Service intervals up to 40,000 hours
- 50/60 Hz motors as standard

## L-Series

Liquid Ring



- High resistance to corrosion
- Contact-less operation
- Increased water carry-over models
- UL/CSA approval
- 50/60 Hz motors as standard
- Available in partial or closed circulated
- 2BL offers spindle cooling for routers



C-VLR



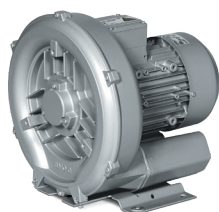
C-VLU



V-VCS



V-VTR



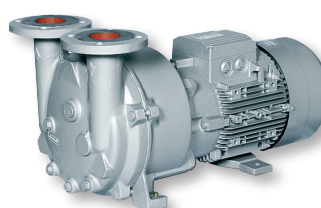
G-BH1



G-BH2



L-BL2



L-BV5



## ■ Vacuum Laminating

- Vacuum is used as a pressing force to laminated wood products
- Typically wood veneers are glue bonded to wood base substrates
- Laminated products are placed in a press or vacuum bag to cure
- Vacuum force presses the layers together and extracts excess glue for uniformity

## ■ Wood Drying

- Moisture content in wood is reduced by vacuum drying
- Wood is placed in a chamber and vacuum is applied
- Reduces drying time from weeks to 3-4 days

### V-Series Rotary Vane



- Compact footprint
- Low noise level
- Long life vanes
- Oil-free or lubricated designs
- Extended maintenance intervals

### L-Series Liquid Ring

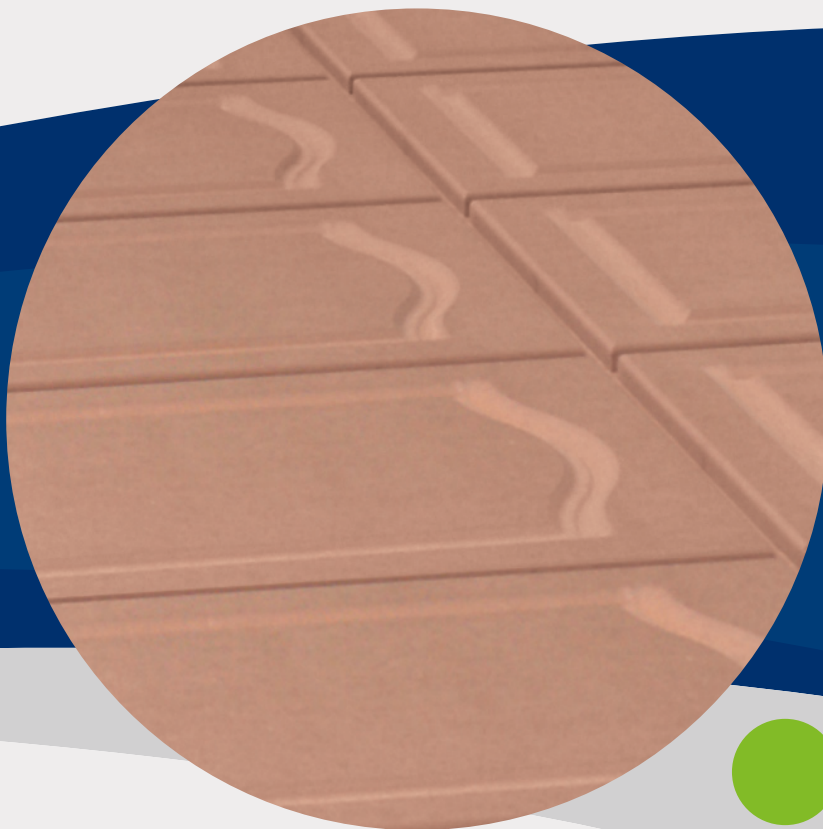


- High resistance to corrosion
- Contact-less operation
- Increased water carry-over models
- UL/CSA approval
- 50/60 Hz motors as standard
- Available in partial or closed circulated

### S-Series Screw



- Continuous variable pitch screws
- Short evacuation times
- Oil-free compression
- High water vapor tolerance
- Minimal maintenance costs



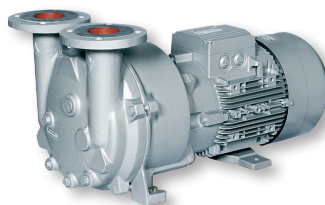
V-VCS



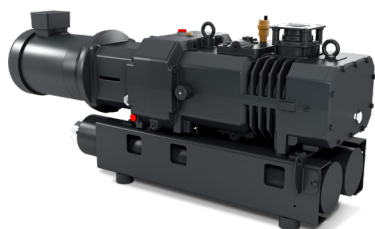
V-VTR



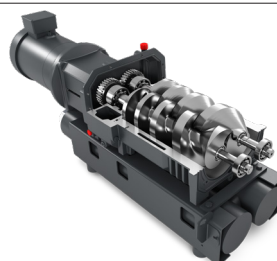
L-BL2



L-BV5



S-VSI



S-VSI

## ■ Vacuum Impregnation

- Pressure treated lumber is first vacuum dried under vacuum
- Vacuum degasses and dries wood to prepare for liquid wood preservative
- Vacuum dried wood allows preservative to penetrate deeper into the fibers
- Pressure is then applied to drive preservative down into lower layers

## ■ Vacuum Dust Collection

- Vacuum is used to suction off wood dust and shavings from work areas
- Scrap is conveyed to central collection bins for disposal or recycling
- In-line filters play an important role in protecting vacuum blower unit



### V-Series

Rotary Vane



- Compact footprint
- Low noise level
- Long life vanes
- Oil-free or lubricated designs
- Extended maintenance intervals

### S-Series

Screw



- Continuous variable pitch screws
- Short evacuation times
- Oil-free compression
- High water vapor tolerance
- Minimal maintenance costs

### L-Series

Liquid Ring



- High resistance to corrosion
- Contact-less operation
- Increased water carry-over models
- UL/CSA approval
- 50/60 Hz motors as standard
- Available in partial or closed circulated

### G-Series

Side Channel



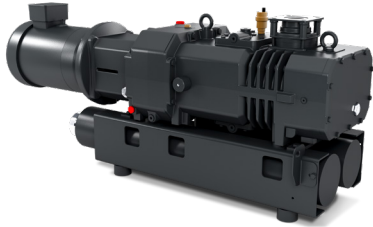
- Contact-less operation
- Quiet operation
- Tolerant to dust ingestion
- UL/CSA approved
- Service intervals up to 40,000 hours
- 50/60 Hz motors as standard



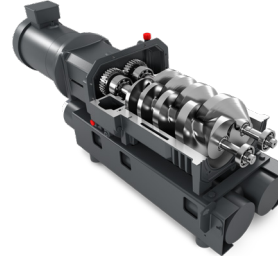
V-VCS



V-VTR



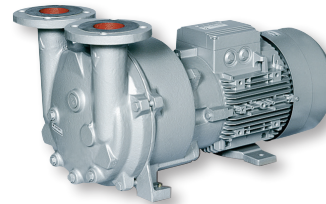
S-VSI



S-VSI



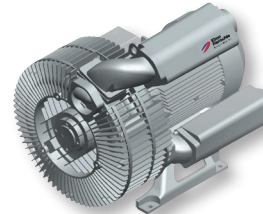
L-BL2



L-BV5



G-BH1



G-BH2



**The leader** in every market we serve  
by continuously improving all business processes  
with a focus on **innovation and velocity**



[www.ElmoRietschle.com](http://www.ElmoRietschle.com)

©2025 Industrial Technologies and Services, LLC.  
Printed in U.S.A.  
ER-APP-WOOD 5th Ed. 5/25

