

VACUUM & PRESSURE PRODUCTS

Woodworking Industry



■ Vacuum Hold-Down

- Vacuum is used as a holding force on CNC router tables
- It provides an even uniform clamping force to prevent shifting of material
- Wood, plastic and metal are held in place while routers cut out shapes
- Mechanical clamping does not yield the same results as vacuum



C-Series

Claw



- Contact-less operation
- Oil-free compression
- Highly efficient
- No wearing parts
- Minimal maintenance

V-Series

Rotary Vane



- Compact footprint
- Low noise level
- Long life vanes
- Oil-free or lubricated designs
- Extended maintenance intervals

G-Series

Side Channel



- Contact-less operation
- Quiet operation
- Tolerant to dust ingestion
- UL/CSA approved
- Service intervals up to 40,000 hours
- 50/60 Hz motors as standard

L-Series

Liquid Ring



- High resistance to corrosion
- Contact-less operation
- Increased water carry-over models
- UL/CSA approval
- 50/60 Hz motors as standard
- Available in partial or closed circulated
- 2BL offers spindle cooling for routers



C-VLR



C-VLR



V-VC



V-VTR



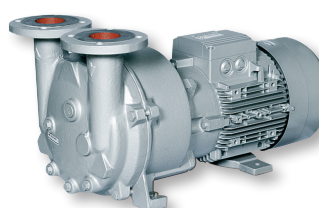
G-BH1



G-BH2



L-BL2



L-BV5



■ Vacuum Laminating

- Vacuum is used as a pressing force to laminated wood products
- Typically wood veneers are glue bonded to wood base substrates
- Laminated products are placed in a press or vacuum bag to cure
- Vacuum force presses the layers together and extracts excess glue for uniformity

■ Wood Drying

- Moisture content in wood is reduced by vacuum drying
- Wood is placed in a chamber and vacuum is applied
- Reduces drying time from weeks to 3-4 days

V-Series Rotary Vane



- Compact footprint
- Low noise level
- Long life vanes
- Oil-free or lubricated designs
- Extended maintenance intervals

L-Series Liquid Ring

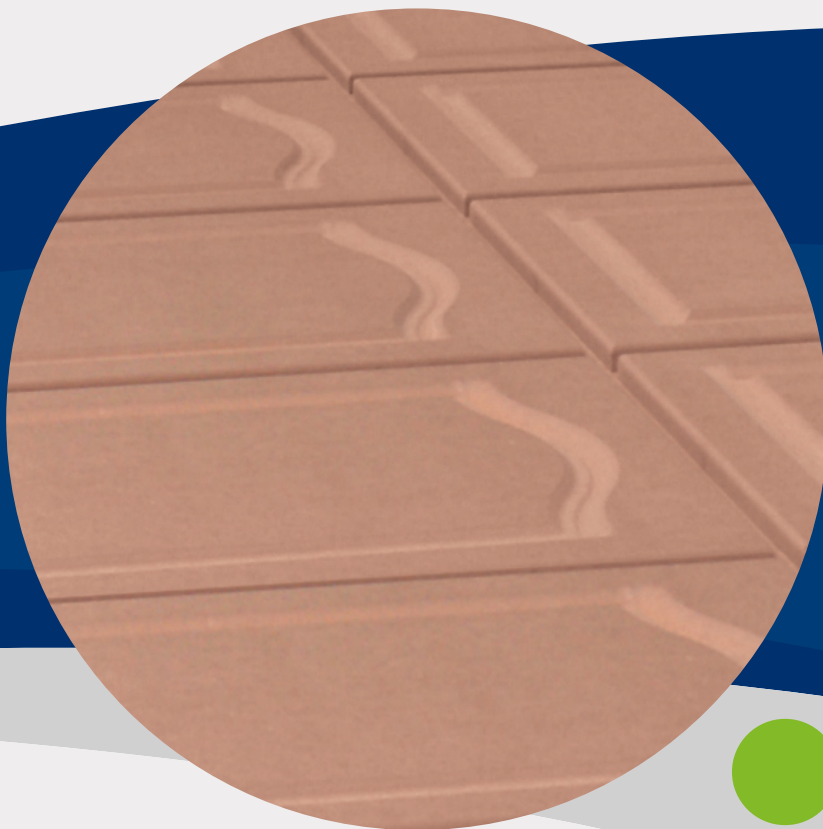


- High resistance to corrosion
- Contact-less operation
- Increased water carry-over models
- UL/CSA approval
- 50/60 Hz motors as standard
- Available in partial or closed circulated

S-Series Screw



- Continuous variable pitch screws
- Short evacuation times
- Oil-free compression
- High water vapor tolerance
- Minimal maintenance costs



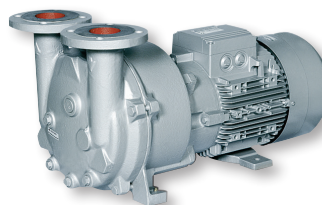
V-VC



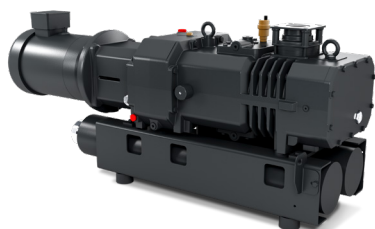
V-VTR



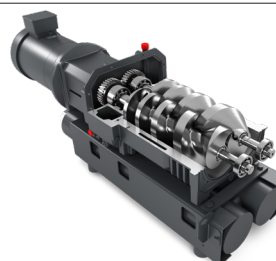
L-BL2



L-BV5



S-VSI



S-VSI

■ Vacuum Impregnation

- Pressure treated lumber is first vacuum dried under vacuum
- Vacuum degasses and dries wood to prepare for liquid wood preservative
- Vacuum dried wood allows preservative to penetrate deeper into the fibers
- Pressure is then applied to drive preservative down into lower layers

■ Vacuum Dust Collection

- Vacuum is used to suction off wood dust and shavings from work areas
- Scrap is conveyed to central collection bins for disposal or recycling
- In-line filters play an important role in protecting vacuum blower unit



V-Series

Rotary Vane



- Compact footprint
- Low noise level
- Long life vanes
- Oil-free or lubricated designs
- Extended maintenance intervals

S-Series

Screw



- Continuous variable pitch screws
- Short evacuation times
- Oil-free compression
- High water vapor tolerance
- Minimal maintenance costs

L-Series

Liquid Ring



- High resistance to corrosion
- Contact-less operation
- Increased water carry-over models
- UL/CSA approval
- 50/60 Hz motors as standard
- Available in partial or closed circulated

G-Series

Side Channel



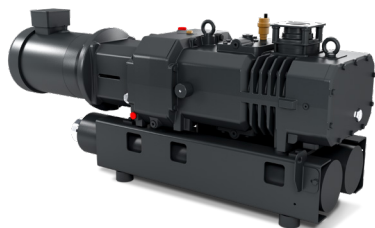
- Contact-less operation
- Quiet operation
- Tolerant to dust ingestion
- UL/CSA approved
- Service intervals up to 40,000 hours
- 50/60 Hz motors as standard



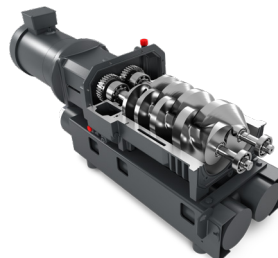
V-VC



V-VTR



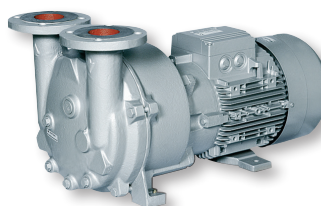
S-VSI



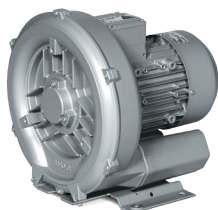
S-VSI



L-BL2



L-BV5



G-BH1



G-BH2



The leader in every market we serve
by continuously improving all business processes
with a focus on **innovation and velocity**



www.ElmoRietschle.com

©2024 Industrial Technologies and Services, LLC.
Printed in U.S.A.
ER-APP-WOOD 3rd Ed. 8/24

