

C-VLU 401 | C-VLU 501



High efficiency, dry and contact free compression claw vacuum pumps

- Capacities ranging from 244 to 412 acfm
- Ultimate vacuum at continuous operation: 28.2 inHgV
- Fitted as standard with flange motor
- Air cooling by integrated fan
- Standard features include silencing hood, fine mesh filter, vacuum non-return valve on suction side

Technical Data

			VLU 401	VLU 501
Nominal suction capacity	ACFM	50 Hz	244	303
		60 Hz	291	351
Ultimate vacuum at continuous operation	torr (abs) / inHg (ga)	50 Hz	45 / 28.2	45 / 28.2
		60 Hz		
Motor rating	hp	50 Hz	15 HP	20 HP
		60 Hz		
Full load amps	A	50 Hz	20.9 / 12.1	20.9 / 12.1
		60 Hz	34.0 / 17.0	46.4 / 23.2
Speed	RPM	50 Hz	2950	2950
		60 Hz	3500	3520
Average noise level	dB(A) EN ISO 3744	50 Hz	79	80
		60 Hz	83	83
Max. Weight without motor	lbs		785	817
Oil capacity	qt		1.9	1.9

AFCM * refers to suction conditions at inlet connection

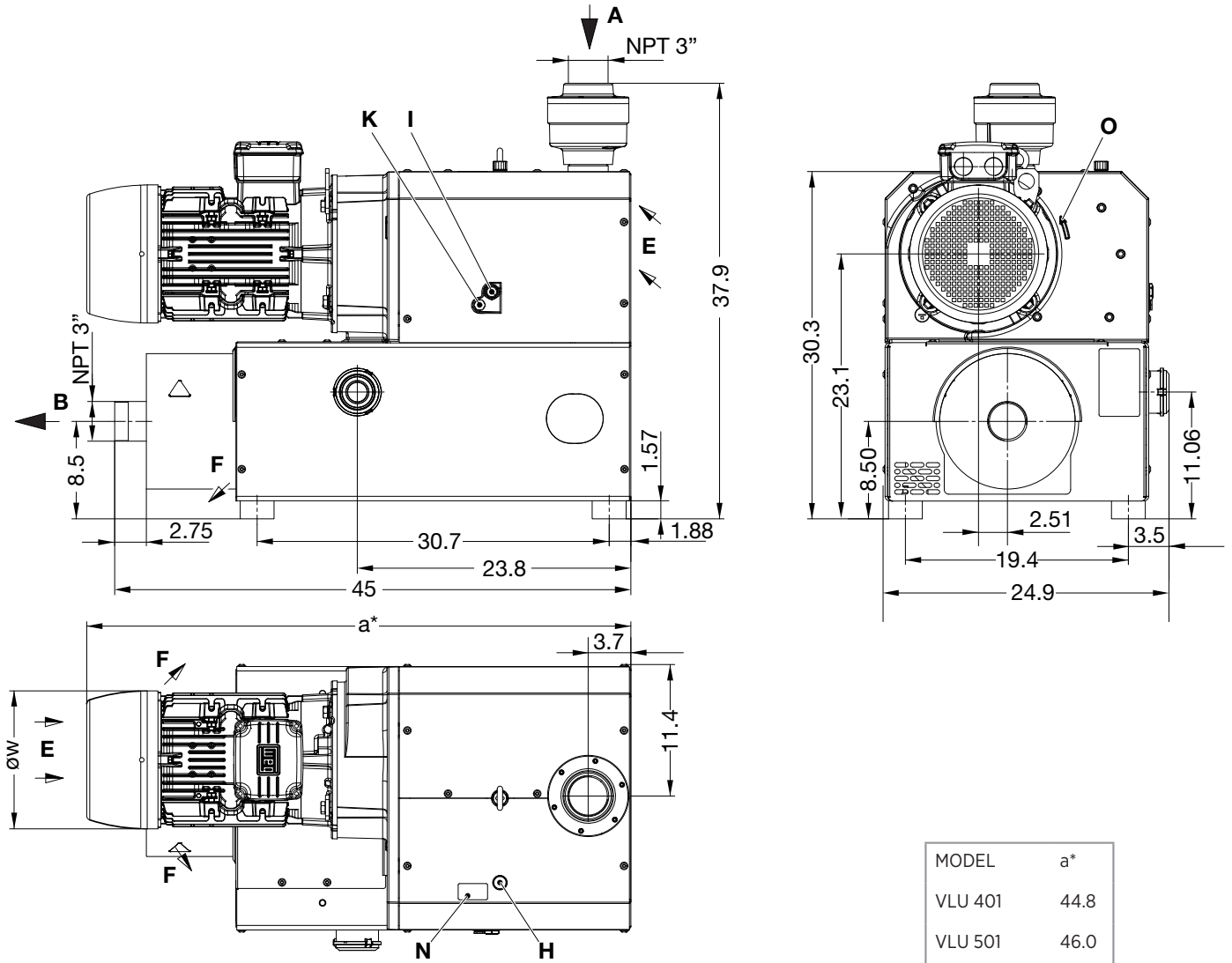
Curves and tables content (tolerance ±10 %) according to PNEUROP standards and refer to vacuum pump at normal operating temperature 1 atm or 760 torr, 68 °F.

Measuring surface sound pressure level according to EN ISO 3744, measured with an equivalent unit at a distance of 3 ft. The pump is throttled to 300 torr (abs) suction pressure, with suction side piping connected and vacuum relief valves fitted, tolerance ± 3 dB (A).

The picture shows possibly optional accessories.

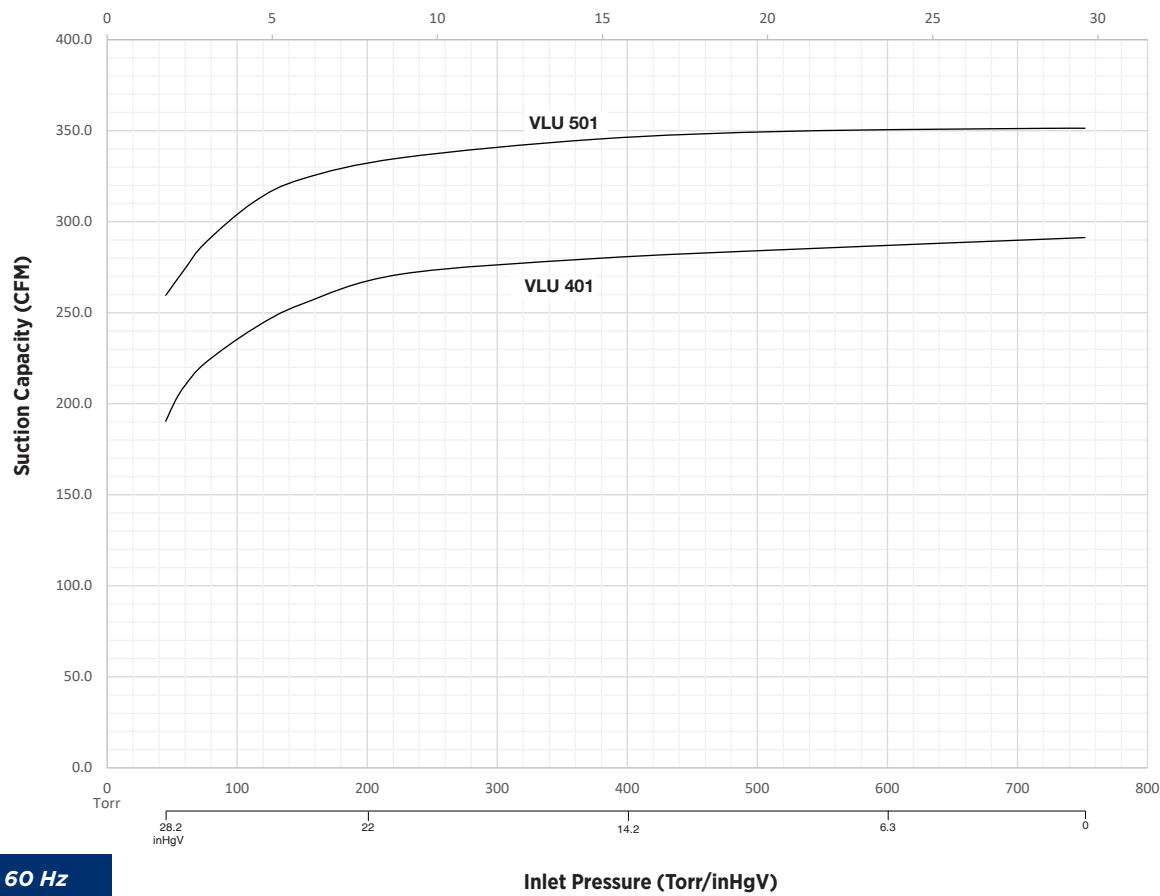
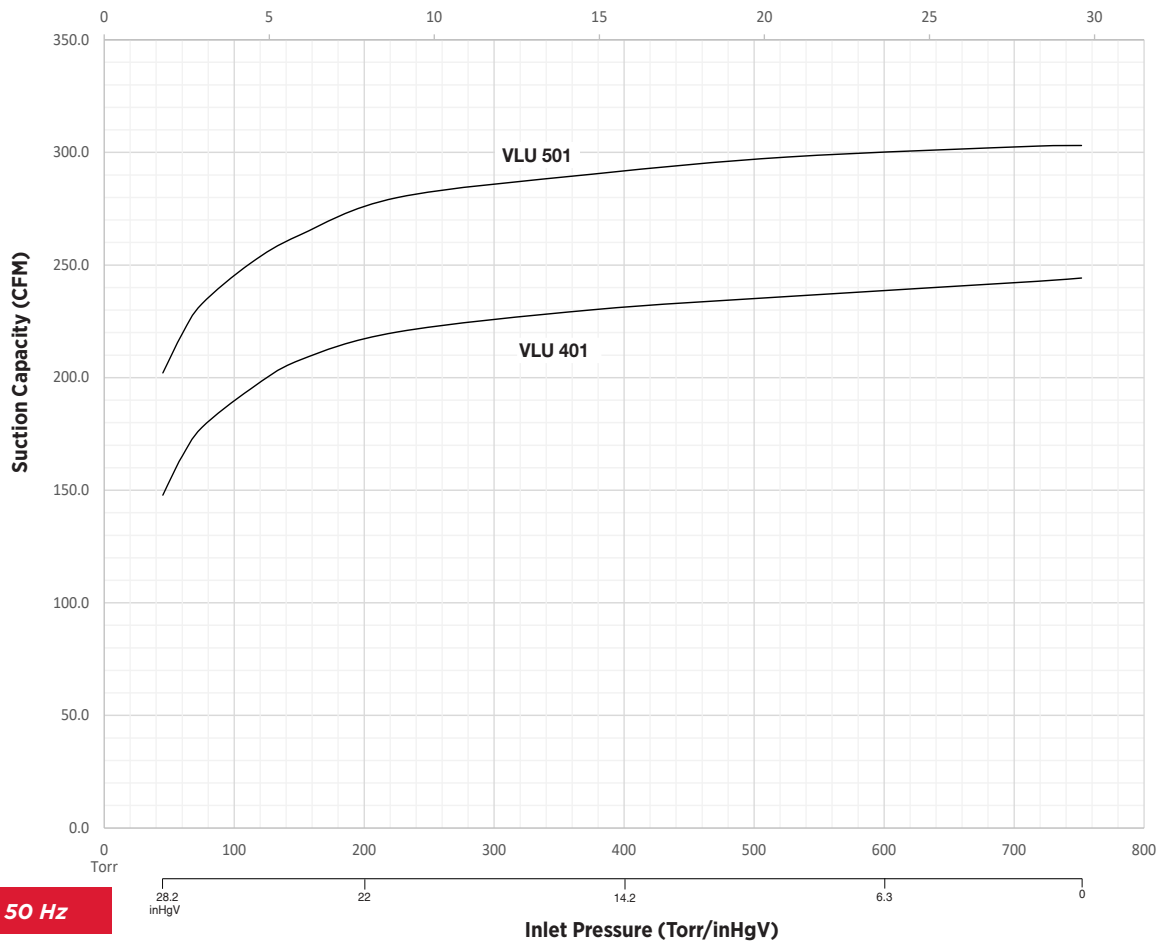
We reserve the right to alter technical information!

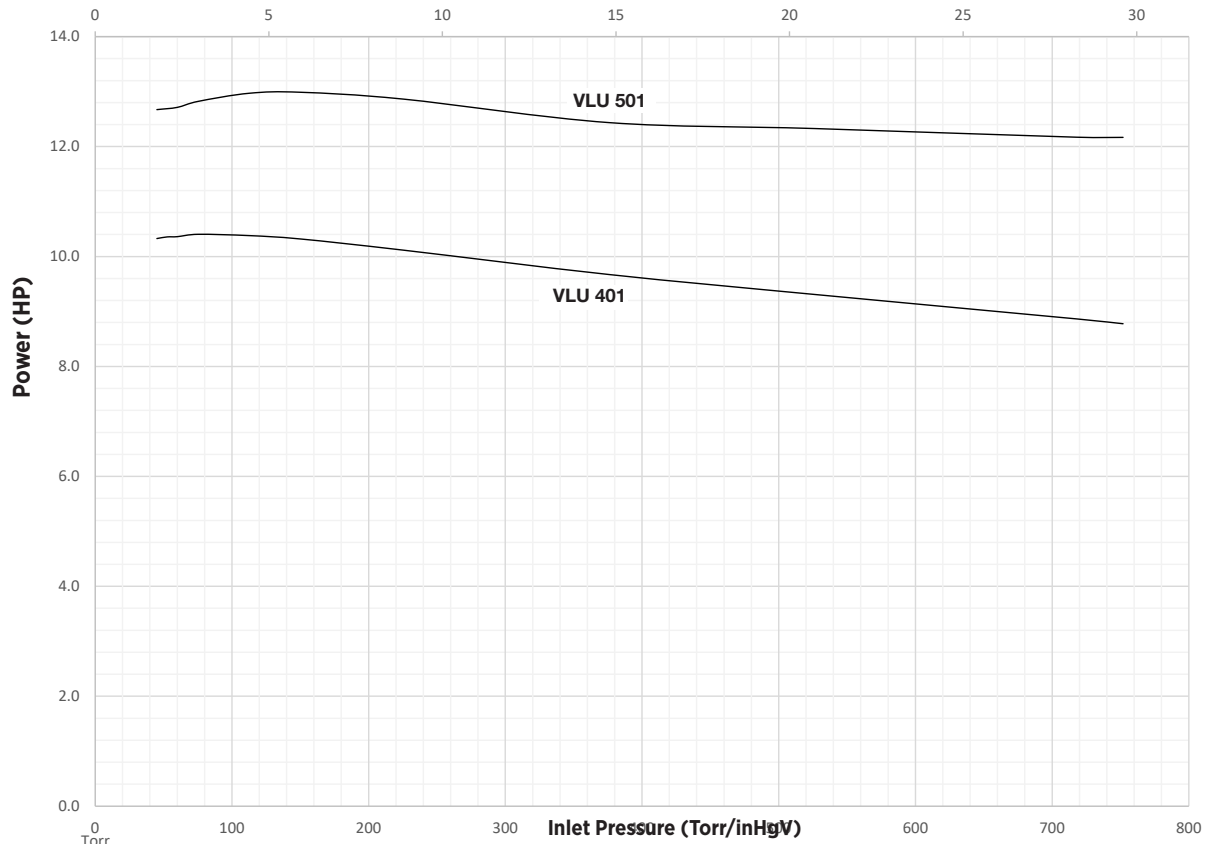
Dimensions [in]



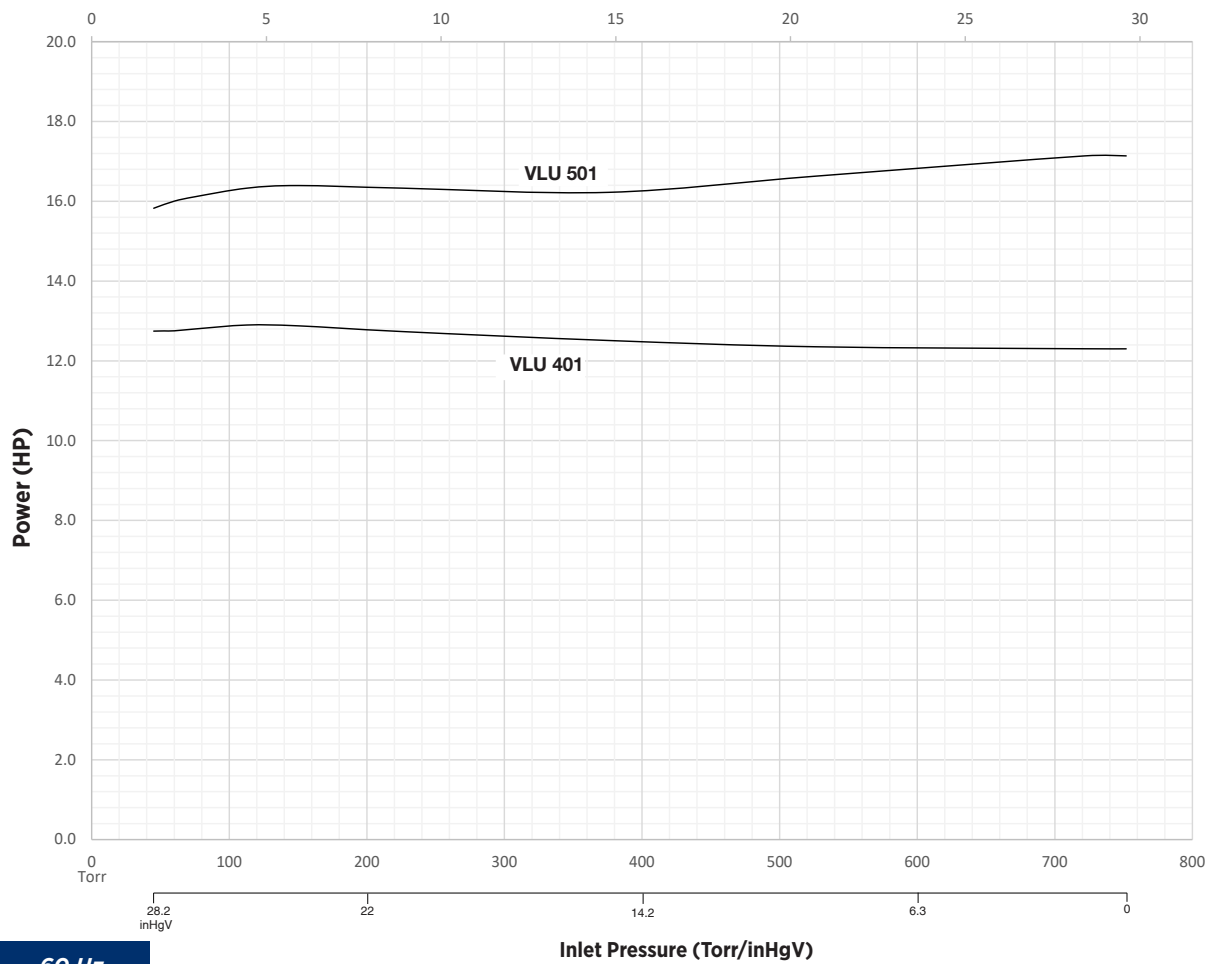
A	Vacuum connection
B	Exhaust
E	Cooling air inlet
F	Cooling air outlet
H	Oil filling point
I	Oil sight glass
K	Oil drain point
N	Data plate
O	Direction of rotation

Characteristic Curves





50 Hz



60 Hz



www.ElmoRietschle.com

©2024 Industrial Technologies and Services, LLC.
D893-NA_VLU_401-501



Please recycle after use.

