

# Pressure Relief Valves

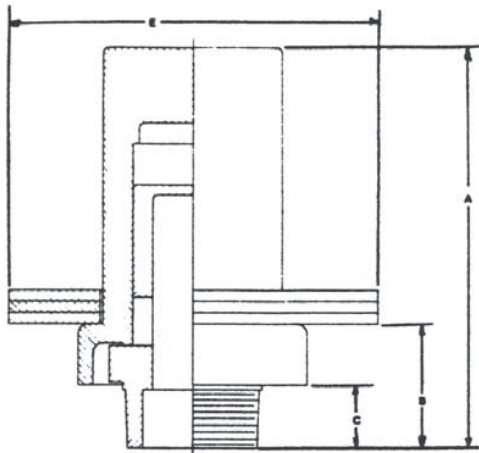


The Sutorbilt threaded weight loaded pressure relief valve offers inexpensive relief capacity in a sturdy, trouble free design in 1" through 4" sizes. These sizes have standard male threaded connections. Removable weights have been carefully designed to permit accurate pressure settings in 1/2 PSI increments.

The operation of the relief valve is simple. As the service line air pressure reaches the pressure setting, the weight loaded cap is forced upwards off the valve seat. As pressure increases, the cap rises to expose the discharge ports. The flow-through capacity of the valve is such that no damage can be caused to the blower or related systems. The valve automatically reseats itself as line pressure is reduced.

Application of light oil to the mating surfaces of the cap and body periodically is all the maintenance required on this valve.

THREADED- 1", 2", 3" AND 4"



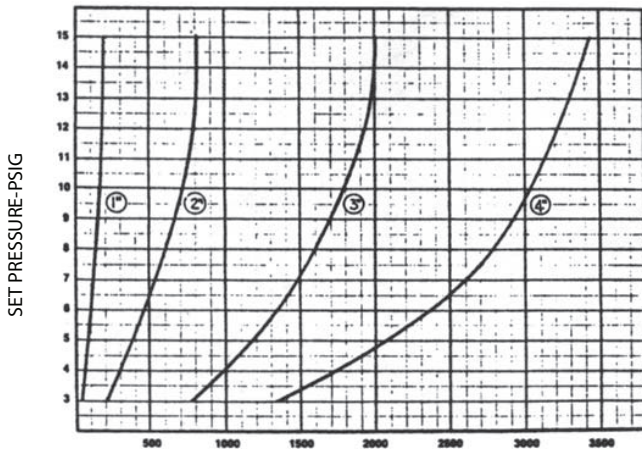
The Sutorbilt weight loaded relief valve was engineered to provide long life and dependable protection for your Sutorbilt blower long life and associated systems by its simplicity of design. Weight loaded pressure relief valves are designed to protect the blower against damage caused by operation at greater than design pressure or vacuum. However, they are not intended as pressure regulators.

For proper operation, the valve must be mounted in exact upright position.

DIMENSION CHART

VALVE SIZE	A	B	C	D	E
1"	6 13/16	2 1/16	1 7/16	1" NPT	3 1/2
2"	7 1/8	2 3/8	1 5/16	2" NPT	6 13/16
3"	9 7/8	3 1/16	1 9/16	3" NPT	9 1/4
4"	11 3/8	3 7/16	1 11/16	4" NPT	11 11/16

CAPACITY CHART



CAPACITY-CFM @ STANDARD CONDITIONS