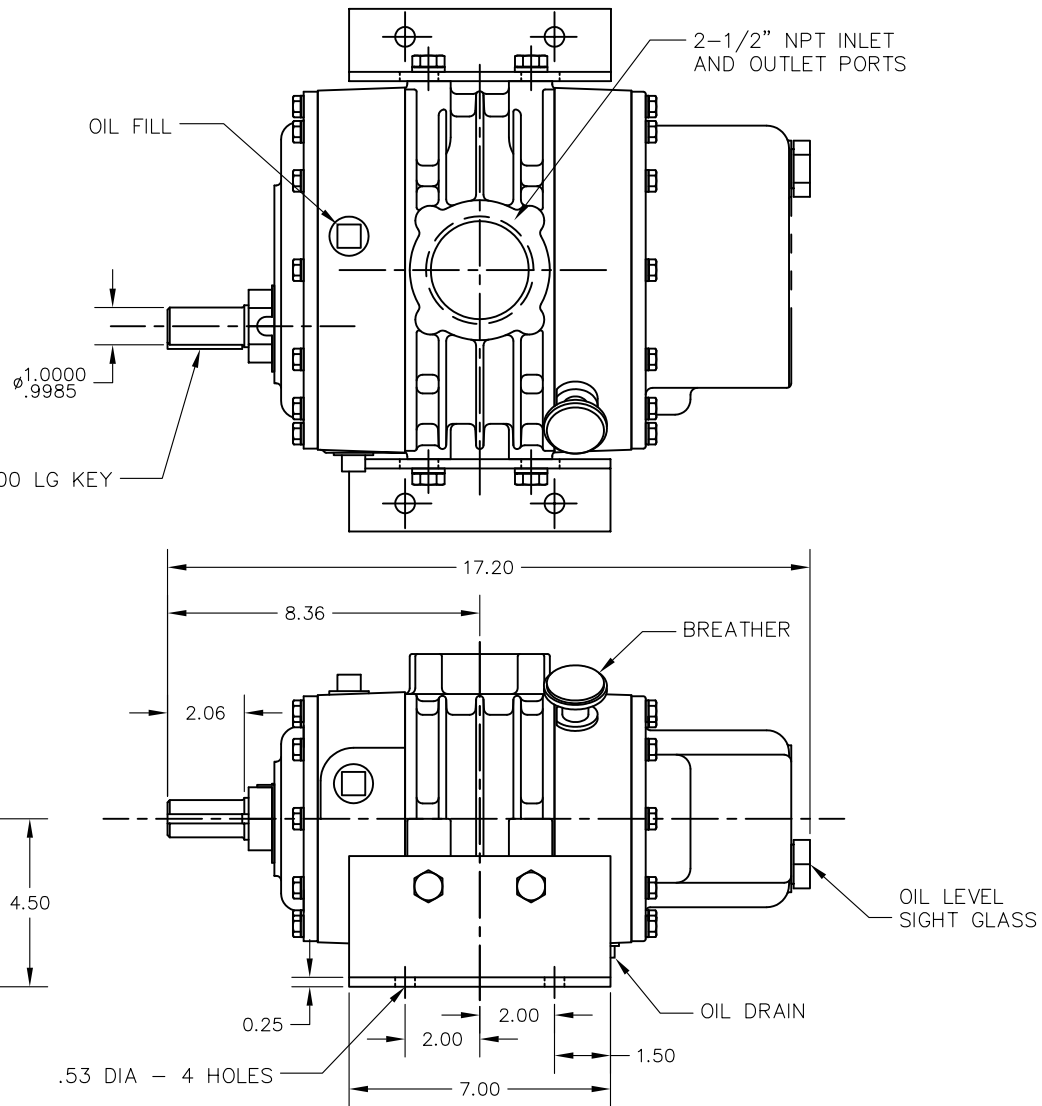


| | | |
|------------------|----------------------------|----------------|
| CONSTRUCTION | ROTATION | DISCHARGE PORT |
| HORIZONTAL—RIGHT | CLOCKWISE [CW] | BOTTOM |
| | COUNTER—CLOCKWISE [CCW] | TOP |



ESTIMATED WEIGHT - 120 LBS

NOTE: DIMENSIONS ARE +/- .06 INCHES
UNLESS OTHERWISE SPECIFIED

CONFIDENTIAL - THE INFORMATION CONTAINED IN THIS DOCUMENT IS THE PROPERTY OF GARDNER DENVER MACHINERY INC. IT IS NOT FOR PUBLIC DISCLOSURE. POSSESSION OF THE INFORMATION DOES NOT CONVEY ANY RIGHT TO LOAN, SELL, OR DISCLOSE THE INFORMATION. UNAUTHORIZED REPRODUCTION OR USE OF THE INFORMATION IS PROHIBITED. THIS DOCUMENT IS TO BE RETURNED TO GARDNER DENVER MACHINERY INC. UPON COMPLETION OF THE PURPOSE FOR WHICH IT IS LOANED OR UPON REQUEST.

| TAP DRILL DEPTHS ARE MAXIMUM. FULL THD. DEPTHS ARE MINIMUM. | | | | | | | | | | | | FINISH OF CHAMFERS & FILLETS TO CONFORM TO ROUGHEST ADJACENT AREA | | | | | | SURFACE ROUGHNESS MAX. PER ASA SPEC. | | | | | |
|---|--------------------------|--|----------|-----|-----|------|----------|--|------|-----|-----|---|----------|--|------|-----|-----|---|-----|----------|-----------|---|--|
| LET. | REVISION | | DATE | DR. | CK. | LET. | REVISION | | DATE | DR. | CK. | LET. | REVISION | | DATE | DR. | CK. | <div><div>Gardner Denver</div><div>Gardner Denver Inc. Peachtree City, Georgia</div></div> <div><div>TOLERANCES: UNLESS OTHERWISE SPECIFIED</div><div>DECIMAL .XX ± .02 .XXX ± .010</div><div>NON-DECIMAL ± 1/16 ANGLES ± 1°</div></div> <div><div>HEAT TREAT SPEC.</div><div>—</div></div> | | | | | |
| A | RELEASED (C/M 1018300) | | | | | | | | | | | | | | | | | | | | | | |
| B | WAS 1.75 LG: ECN 1027922 | | 10/12/05 | TWT | RS | | | | | | | | | | | | | CK. | SM | 10/14/03 | ENG. APP. | — | |
| | | | | | | | | | | | | | | | | | | SCALE | 3/8 | | | | |
| | | | | | | | | | | | | | | | | | | 306GGB800 | | | | | |
| | | | | | | | | | | | | | | | | | | FILE NO. C CAD/CAM | | | | | |