

# Gardner Denver®

L04-L290 (5-390 HP)  
FIXED-SPEED ROTARY SCREW COMPRESSORS

## L-Series



# Advanced Technology Inspired Simplicity

## A Better Approach

Gardner Denver has a long history of manufacturing compressed air equipment. With our L-Series line of products, we have uniquely combined simplicity with cutting edge design. The result—a compressor that delivers outstanding performance with unprecedented serviceability.

## The Total Package

Gardner Denver has the total package—extensive compressor and air treatment product lines, sales and service support through our extensive network of authorized local distributors, and industry leading warranty programs. Because we offer more than just compressed air equipment, we can provide solutions that keep you running, protect your production objectives, and save you money.



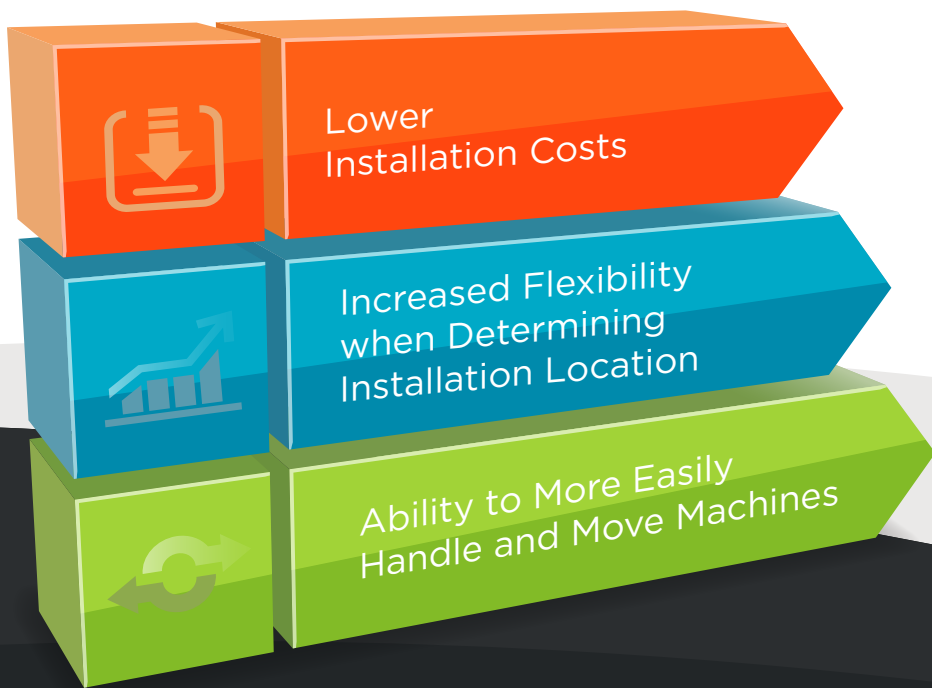
Expect More?  
Choose Gardner Denver





GARDNER  
DENVER—TAKING  
**QUIET**  
TO A WHOLE  
NEW LEVEL

Without sacrificing serviceability, the L-Series compressor packages feature some of the **smallest footprints** in the industry.

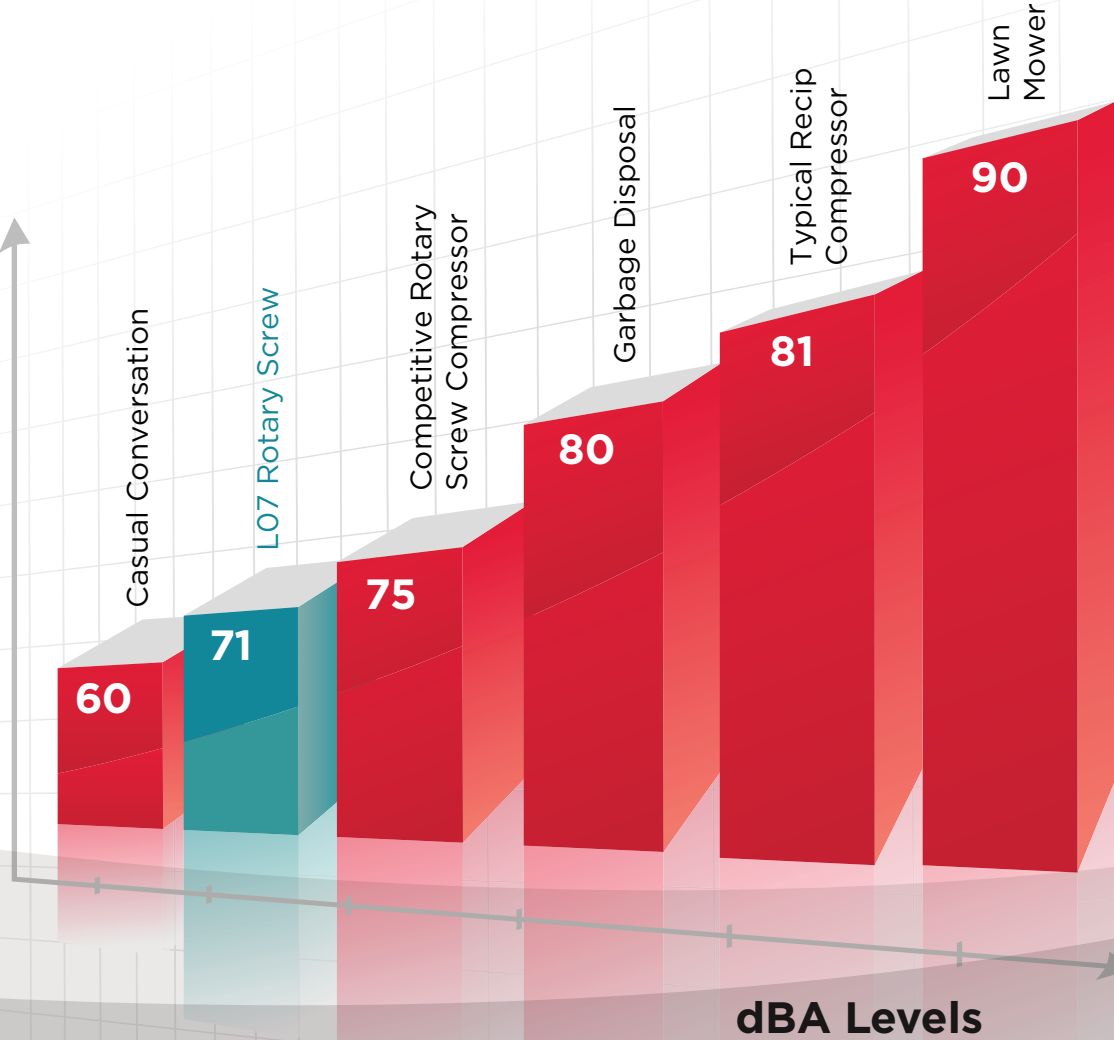


Small Footprint = Cost Savings

# Compact, Quiet Compressors

## Nearly Silent Noise Levels

The Gardner Denver L-Series compressor designs feature high-quality, sound-insulating enclosure panels and a low-noise, thermostatically-controlled, motor-driven fan. These components reduce the noise to whisper-quiet levels and eliminate the need for a separate compressor room, saving money on installation costs.

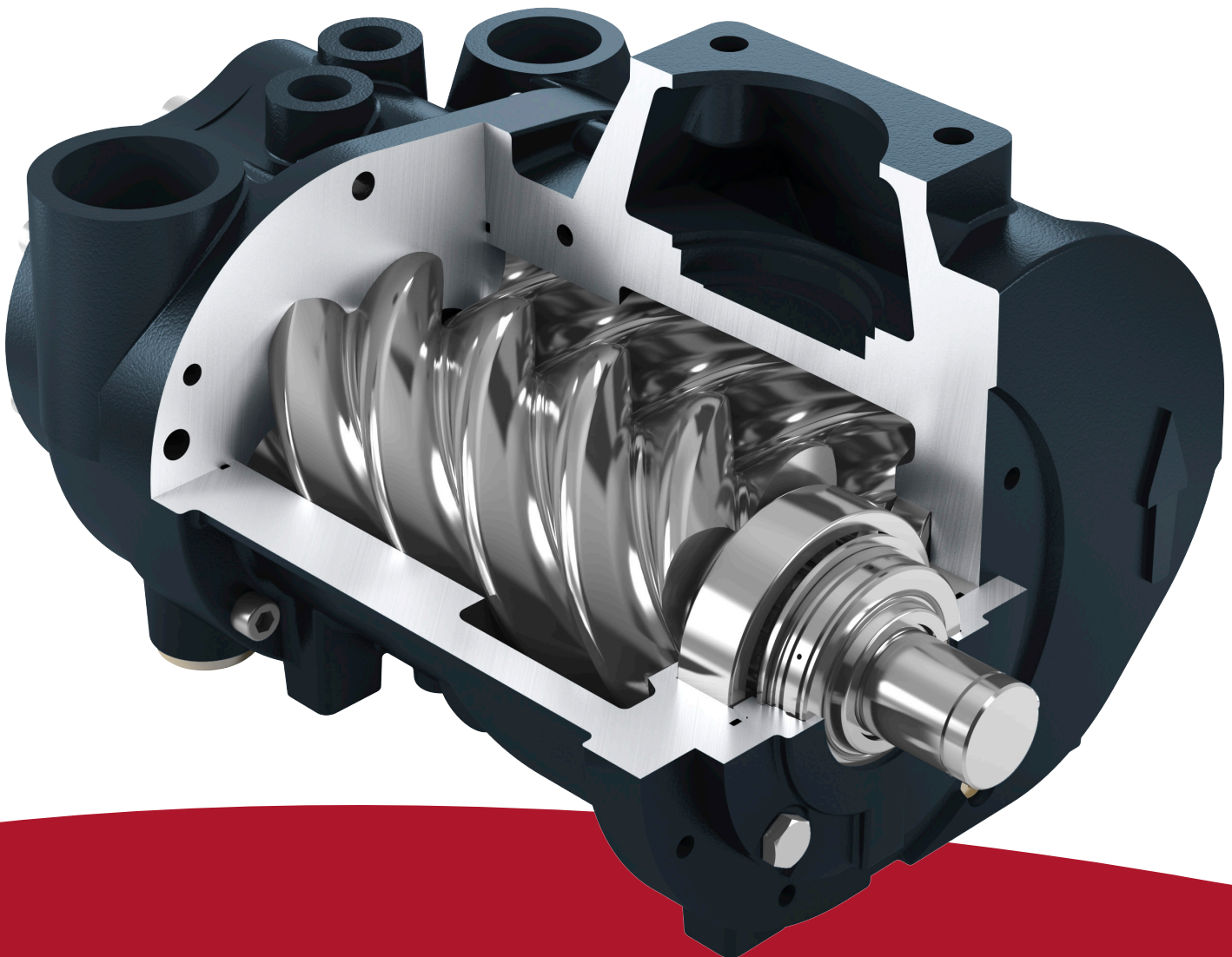




# Stay Focused on What Is **Important**

Compressors are more than just a financial investment. They are a key component in ensuring that you, as a manufacturer, processor and operator, receive consistent, high-quality low-cost air. Gardner Denver uses the latest design techniques to develop a compressor that focuses on the three most important aspects of a compressor.

**Reliability. Performance. Value.**



Direct Gear Drive Fewer Hose Connections  
Integrated Thermostatic Mixing Valve Direct Angle Injection Integrated Air Filter Low Rotational Speeds

# RELIABILITY

Integrated Oil Filter Integrated Oil Separator Belt Drive  
Reduced Number of Components Fully Integrated Airend Semi Integrated Airend  
Fail Safe Shaft System Less Leak Opportunities

## Verified Performance

As a member of the Compressed Air and Gas Institute's performance verification program, you can rest assured that the performance numbers that Gardner Denver publishes are consistent with the actual performance of our machines. Gardner Denver compressors, just as all lubricated rotary screw compressors 5 HP and above, are third-party tested to ensure that our performance numbers are accurate, easy-to-understand and verified.



Gardner Denver —  
**Exceeding** Your Expectations

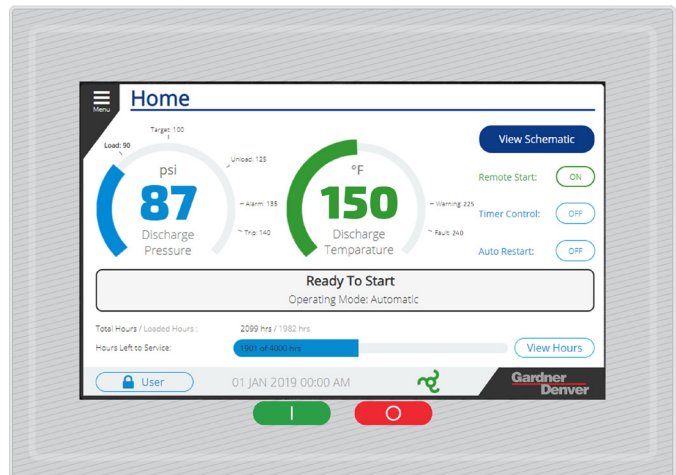
# Get in Touch with the **Next Generation** of Compressor Controllers

## State-of-the-Art

Gardner Denver completes its industry leading compressor packages with state-of-the-art touchscreen controllers: the GD Pilot and Governor™. Featuring cutting edge graphics that provide necessary compressor data and full color schematics in seconds, the Governor™ is now available on select L-Series and LRS-Series compressors models.

## Governor™ Touchscreen Controller Features

- Available on L23-L290 compressor models
- User-friendly navigation with state-of-the-art graphics and design
- Machine status available on a 7-inch, full color touchscreen display for L30-L290 and a 4.3-inch display for L23-29
- Detailed schematics at your fingertips
- Advanced machine diagnostics
- Data logging and iConn connection
- Web server to allow access to the Governor™ from your desktop

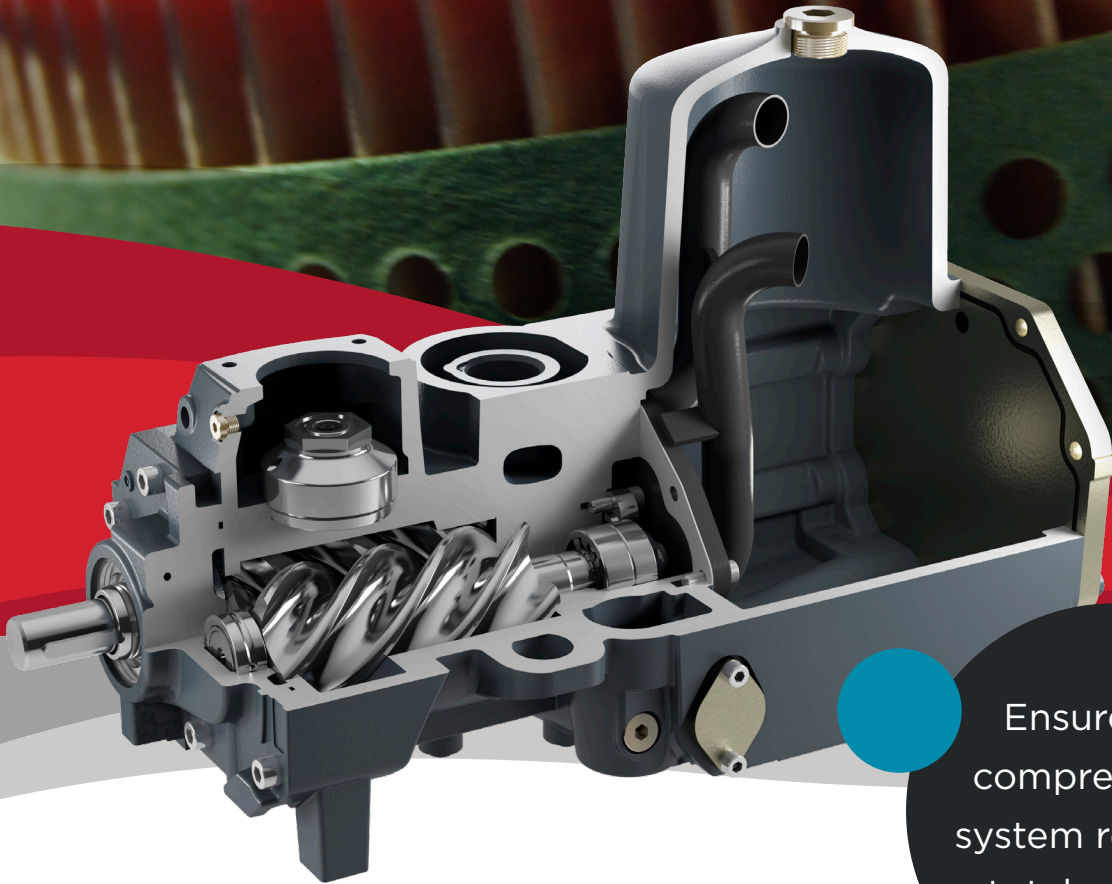


## GD Pilot Controller Features

- Available on L04-L22 compressor models
- Real time clock
- Second pressure setting
- Discharge/line/network pressure data displayed
- Advanced fault history log
- Programmable inputs and outputs
- Auto restart after power failure
- RS485-Modbus RTU standard



# Keeping the System Healthy



Ensure your  
compressed air  
system remains a  
total package

## Total System Protection

Since 1859, Gardner Denver has been supporting the compressed air industry with high quality, long-lasting compressor and air treatment solutions. Carrying on that legacy, our robust line of parts, lubricant and downstream accessories ensure your system stays healthy.

The focus on total system protection by Gardner Denver not only includes OEM parts and fluid solutions, but a commitment to the longevity of your equipment through our industry leading warranty programs.

## Protect your investment.

# Sales & Service **Distributors** Across America

## An Extensive Network

By leveraging the extensive network of Gardner Denver factory-trained authorized local distributors, your sales, service, and technical support needs can be handled quickly and easily.

To find a distributor visit:  
[www.GardnerDenver.com](http://www.GardnerDenver.com)



## Best **Warranties** in the Industry

The engineering philosophy of Gardner Denver is to design high quality, reliable equipment and help you protect your new equipment to give you peace of mind. We offer a good, better, and best approach to warranty programs.

### Standard Warranty

Protects your newly purchased equipment if you encounter defects in materials or workmanship for 1 year and provides 2 years of parts and labor coverage for most major components.

### Platinum 10-Year Extended Warranty

The Platinum 10-Year Extended Warranty covers everything in the Standard Warranty as well as defects in materials or workmanship of the air end parts for 10 years and provides 5 years coverage on major components. The equipment must be maintained on-schedule in accordance with the requirements of the warranty statement and the operations manual.

### Platinum+ Full Package Warranty

Adds to the coverage of the Platinum 10-Year Extended Warranty and changes to a 5-year renewable service agreement with one of our factory-trained distributors. By paying for the additional protection, you gain peace of mind, a partnership with your trusted distributor, and the added coverage of wear items and other package components.



# L04-L290 ROTARY SCREW COMPRESSOR

MODEL	DRIVE MOTOR		50 HZ				60 HZ				NOISE LEVEL <sup>2</sup>	WEIGHT <sup>3</sup>		DIMENSIONS L x W x H
			NOMINAL PRESSURE		FAD		NOMINAL PRESSURE		FAD <sup>1</sup>					
	HP	KW	PSIG	BAR	ACFM	M <sup>3</sup> /MIN	PSIG	BAR	ACFM	M <sup>3</sup> /MIN		DB(A)	LBS	
L04	5	4	NA	NA	NA	NA	100	6.9	19.4	0.55	68	373	169	27 x 25 x 41 (686 x 635 x 1041)
			NA	NA	NA	NA	125	8.6	18.2	0.52				
			NA	NA	NA	NA	190	13.1	12.9	0.36				
L05	7.5	5	NA	NA	NA	NA	100	6.9	28.4	0.80	71	452	206	27 x 25 x 41 (686 x 635 x 1041)
			NA	NA	NA	NA	125	8.6	24.9	0.71				
			NA	NA	NA	NA	190	13.1	18.3	0.52				
L07	10	7	110	7.6	45.9	1.30	100	6.9	44.5	1.26	71	452	206	27 x 25 x 41 (686 x 635 x 1041)
			145	10.0	37.4	1.06	125	8.6	38.7	1.10				
			190	13.1	30.0	0.85	190	13.1	28.8	0.82				
L11	15	11	110	7.6	66.0	1.87	100	6.9	63.1	1.79	73	483	219	27 x 25 x 41 (686 x 635 x 1041)
			145	10.0	56.8	1.61	125	8.6	57.9	1.64				
			190	13.1	46.6	1.32	190	13.1	44.1	1.25				
L15	20	15	110	7.6	95.3	2.70	100	6.9	89.4	2.53	73	739	335	31 x 28 x 47 (787 x 711 x 1194)
			145	10.0	79.8	2.26	125	8.6	83.4	2.36				
			190	13.1	63.5	1.80	190	13.1	63.1	1.79				
L18	25	18	110	7.6	114.7	3.25	100	6.9	110.9	3.14	74	796	361	31 x 28 x 47 (787 x 711 x 1194)
			145	10.0	96.7	2.74	125	8.6	101.9	2.89				
			190	13.1	82.6	2.34	190	13.1	80.2	2.27				
L22	30	22	110	7.6	128.8	3.65	100	6.9	125.8	3.56	74	810	367	31 x 28 x 47 (787 x 711 x 1194)
			145	10.0	113.3	3.21	125	8.6	116.5	3.30				
			190	13.1	92.1	2.61	190	13.1	92.0	2.61				
L23	30	22	110	7.6	146.9	4.16	100	6.9	148.7	4.21	68	1433	650	53 x 35 x 64 (1345 x 880 x 1612)
			145	10.0	121.8	3.45	125	8.6	125.0	3.54				
			190	13.1	105.2	2.98	190	13.1	100.6	2.85				
L26	35	26	110	7.6	170.9	4.84	100	6.9	172.8	4.89	69	1493	677	53 x 35 x 64 (1345 x 880 x 1612)
			145	10.0	145.8	4.13	125	8.6	148.1	4.19				
			190	13.1	121.5	3.44	190	13.1	125.7	3.56				
L29	40	30	110	7.6	194.9	5.52	100	6.9	193.1	5.47	71	1501	681	53 x 35 x 64 (1345 x 880 x 1612)
			145	10.0	169.9	4.81	125	8.6	173.0	4.90				
			190	13.1	145.5	4.12	190	13.1	147.4	4.17				
L30	40	30	110	7.6	203.0	5.75	110	7.6	196.9	5.78	69	2035	923	68 x 37 x 66 (1722 x 920 x 1659)
			145	10.0	176.9	5.01	125	8.6	181.1	5.13				
			190	13.1	150.7	4.27	190	13.1	138.4	3.92				
L37	50	37	110	7.6	247.1	7.00	110	7.6	233.7	6.62	70	2130	966	68 x 37 x 66 (1722 x 920 x 1659)
			145	10.0	217.8	6.17	125	8.6	218.6	6.19				
			190	13.1	187.1	5.30	190	13.1	171.9	4.87				
L45	60	45	110	7.6	282.4	8.00	110	7.6	269.4	7.63	71	2178	988	85 x 49 x 78 (2159 x 1222 x 1971)
			145	10.0	247.1	7.00	125	8.6	245.7	6.96				
			190	13.1	215.7	6.11	190	13.1	189.2	5.36				
L55	75	55	110	7.5	377.5	10.7	110	7.6	345.2	9.77	73	3756	1704	85 x 49 x 78 (2159 x 1222 x 1971)
			145	10	335.8	9.5	125	8.6	343.9	9.74				
			190	13	291.0	8.2	190	13.1	278.0	7.87				
L75	100	75	110	7.5	485.2	13.7	110	8.6	488.1	13.82	75	3844	1744	92 x 54 x 81 (2337 x 1372 x 2040)
			145	10	439.3	12.4	125	10	439.6	12.45				
			190	13	368.3	10.4	190	13.1	384.9	10.90				
L90	125	90	110	7.5	616.0	17.45	110	7.6	579.3	16.40	75	5699	2585	92 x 54 x 81 (2337 x 1372 x 2040)
			145	10.0	546.1	15.47	130	9.0	579.3	16.40				
			190	13.0	474.8	13.45	190	13.1	492.9	13.96				
L110	150	110	110	7.5	733.2	20.77	110	7.6	759.3	21.50	77	6008	2725	92 x 54 x 81 (2337 x 1372 x 2040)
			145	10.0	657.6	18.63	130	9.0	700.6	19.84				
			190	13.0	572.2	16.21	190	13.1	581.9	16.48				
L132	180	132	110	7.5	807.3	22.87	110	7.6	834.9	23.64	78	6272	2845	115 x 82 x 86 (2907 x 2071 x 2195)
			145	10.0	750.8	21.27	130	9.0	784.2	22.21				
			190	13.0	656.2	18.59	190	13.1	652.0	18.46				
L160	215	160	110	7.6	1131.5	32.04	110	7.6	1128.5	31.96	78	9229	4186	115 x 82 x 86 (2907 x 2071 x 2195)
			145	10.0	995.9	28.20	145	10.0	843.1	23.87				
			190	13.1	844.4	23.91	190	13.1	819.5	23.21				
L200	270	200	110	7.6	1385.4	39.23	110	7.6	1338.0	37.89	79	9733	4415	115 x 82 x 86 (2907 x 2071 x 2195)
			145	10.0	1230.7	34.85	145	10.0	1035.2	29.31				
			190	13.1	1037.5	29.38	190	13.1	1010.1	28.60				
L250	340	250	110	7.6	1484.3	42.03	110	7.6	1464.3	41.46	80	10196	4625	115 x 82 x 86 (2907 x 2071 x 2195)
			145	10.0	1307.0	37.01	145	10.0	1182.7	33.49				
			190	13.1	1152.7	32.64	190	13.1	1160.7	32.87				
L290	390	290	110	7.6	1663.3	47.10	110	7.6	1616.7	45.78	81	10251	4650	115 x 82 x 86 (2907 x 2071 x 2195)
			145	10.0	1466.6	41.53	145	10.0	1262.0	35.74				
			190	13.1	1286.9	36.44	190	13.1	1244.3	35.23				

1) Data measured and stated in accordance with ISO1217, Ed. 4, Annex C & Annex E at the following conditions:

Air Intake Pressure 1 bar A, Air Intake Temperature 20° C, Humidity 0% (Dry).

2) Noise levels are for air-cooled and water-cooled models, and measured in free field conditions in accordance with ISO 2151, tolerance +/- 3dB.

3) Weights are for air-cooled models.

The leader in every market we serve  
by continuously improving all business processes  
with a focus on innovation and velocity


**Gardner**  
**Denver**<sup>®</sup>

**Gardner Denver, Inc.**

1800 Gardner Expressway  
Quincy, IL 62305  
[www.gardnerdenver.com](http://www.gardnerdenver.com)



©2023 Gardner Denver, Inc. Printed in U.S.A.  
GS-LO4-L290 11th Ed. 7/23

 Please recycle after use.