



Vortron Industrial Data Sheet

Centrifugal Blowers, Dryers, Aerators, Forced-Air Cleaners

Vortron's **AIRPOWER**® Series Of Industrial Blowers

Z40e

The flagship of Vortron's **AIRPOWER**® series. Where flows of 600 to 1600 SCFM at pressures at or above 70 in-H₂O are required, the **Z40e** surpasses all others! This model exhibits an extraordinarily flat flow/pressure characteristic that is notably absent of the typical "drooping" curve. In some cases, this enables a single **Z40e** to do the work of multiple units. 80% peak efficiency is attained. Ideal for ultra high-performance air knives, high volume blow-off, and de-watering applications typical with canning, beverage, and electronic industries. Also, air evacuation, aeration, large fluidized beds; air or non-corrosive process gas.

MODEL DESIGNATION: Z40e

DESCRIPTION:	Single-stage centrifugal compressor, belt driven, permanently-lubed high-speed spindle.
DRIVE SYSTEM:	Micro-groove multi-ribbed belt with dual-bearing, backside automatic tensioner. Integral Fresh-Aire™ cooling system for belt, tensioner/idler, spindle assembly longevity.
SPINDLE ASSEMBLY:	ABEC 9 precision bearings, permanently lubricated.
SEALS:	Standard: High Performance PTFE Lip High-Speed: (1) Controlled-Gap Labyrinth Seal.

MATERIALS of CONSTRUCTION:

Housing, Volute, Mounting Plate:	A356-T6 Aluminum
Impeller:	Investment Cast Aluminum
Shaft:	Standard: Alloy Steel, Heat-treated Optional: Stainless Steel
Main Drive Pulley:	A356-T6, Hard Anodized
Compressor Pulleys:	Stainless Steel
Cover:	High-Impact Cross-Linked PE
OPERATING SPEED:	14,000 to 28,400 RPM
PERFORMANCE:	See Compressor Map For Actual Performance At Specific Operating Point:
Max. Flow (SCFM):	1600
Max. Pressure (in-H₂O):	200+
Peak Isentropic Effy (%):	80
Ratings:	To 25 HP

PEAK TEMPERATURE:

Inlet (°F):	To 130°; max. not to exceed 200° at discharge
Discharge (°F):	To 200°

LAYOUT:	NEMA C-Face Mount (180 - 284 Series Frame) Vertical or Horizontal Orientation
----------------	--

Connections (Tubular O.D.):

Inlet:	5.0 in.
Discharge:	3.5 in.; Full 360° Discharge Orientation
Rotation:	Clockwise (as viewed from inlet)
Dimensions:	Refer to installation drawing

SYSTEM OPTIONS:

Suction Filters:	(1) High-Performance washable element or HEPA. (2) Integrated filter/silencer.
Mounts:	(1) Rigid steel rails . (2) Compliant vibration isolation mounts.
Motors:	Inverter duty, premium efficient, washdown, explosion proof

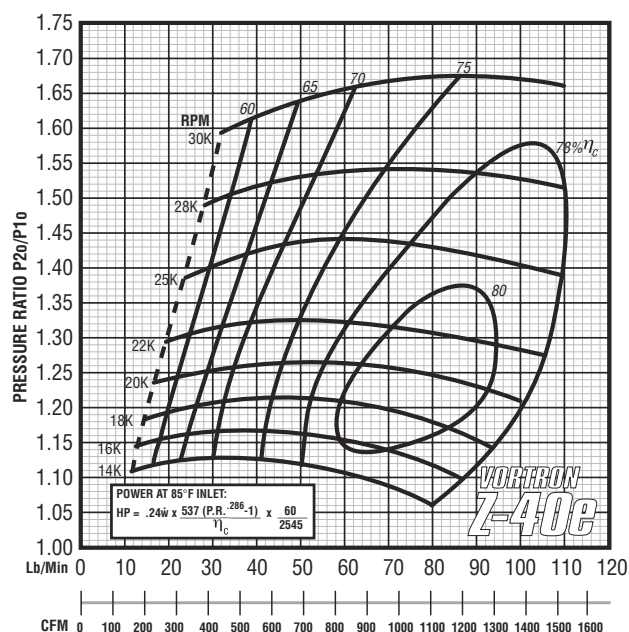
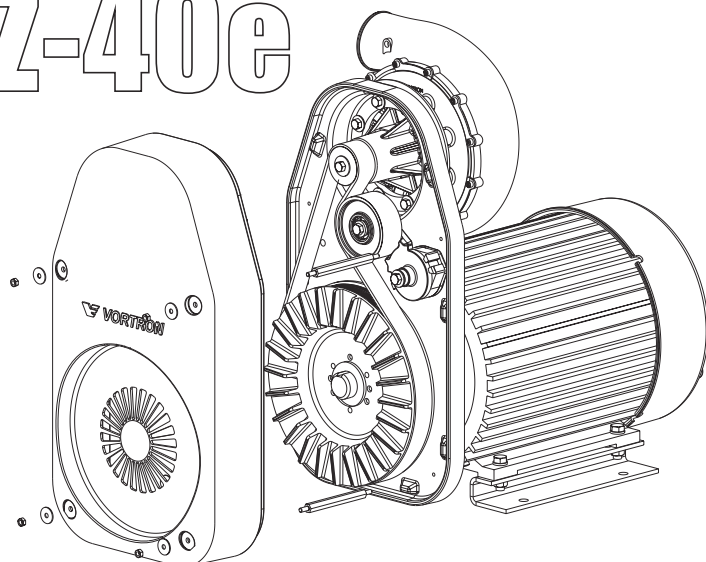


AIRCOM
TECHNOLOGIES
Inc.

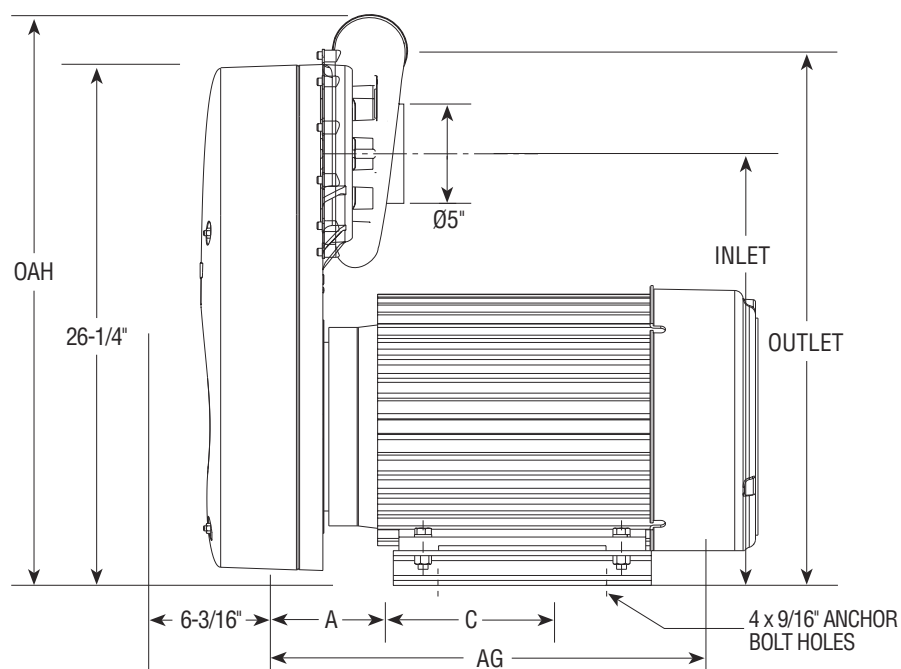
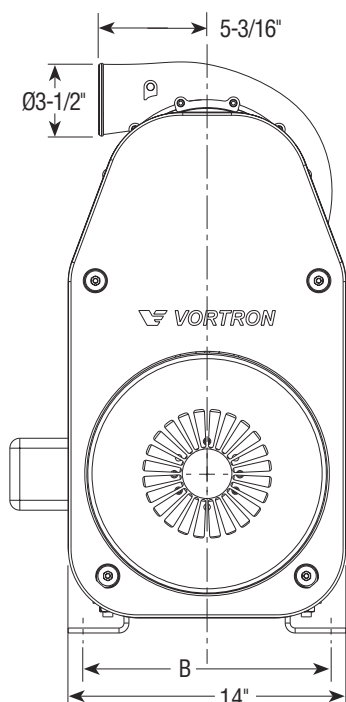
16781 Hymus Blvd, Kirkland (Québec) H9H 3L4
Tel. : 514-695-4740 Toll free : 1 888-940-4740
www.aircom.ca info@aircom.ca

Vortron's **AIRPOWER®** Series Of Industrial Blowers

Z-40e



MOTOR SERIES	STANDARD MOUNTS			ISOLATION MOUNTS			AG	A	B	C	Wt(lbs)
	OAH	INLET	OUTLET	OAH	INLET	OUTLET					
182TC, 182TCH	28-3/4	21-3/4	26-7/8	28-3/4	21-3/4	26-7/8	13-1/2	3	10	8-1/2	123
184TC, B184TC, 184TCH, B184TCH	28-3/4	21-3/4	26-7/8	28-3/4	21-3/4	26-7/8	13-1/2	3-1/2	10	8-1/2	140
213TC	28-3/4	21-3/4	26-7/8	28-3/4	21-3/4	26-7/8	15-1/2	3-1/2	11	8-1/2	170
215TC	28-3/4	21-3/4	26-7/8	28-3/4	21-3/4	26-7/8	17	4-1/4	11	8-1/2	180
254TC	28-3/4	21-3/4	26-7/8	29-1/4	22-5/16	27-3/8	20-1/8	4-7/8	12-1/2	8-1/2	280
256TC, B256TC	28-3/4	21-3/4	26-7/8	29-1/4	22-5/16	27-3/8	21-7/8	5-3/4	12-1/2	8-1/2	300
284TC	30-1/64	23-1/16	28-3/8	30-1/64	23-1/16	28-3/8	23-7/8	6-1/4	13-1/2	8-1/2	360



AIRCOM
TECHNOLOGIES
inc.

16781 Hymus blvd, Kirkland (Québec) H9H 3L4
Tel. : 514-695-4740 Toll free : 1 888-940-4740
www.aircom.ca info@aircom.ca